

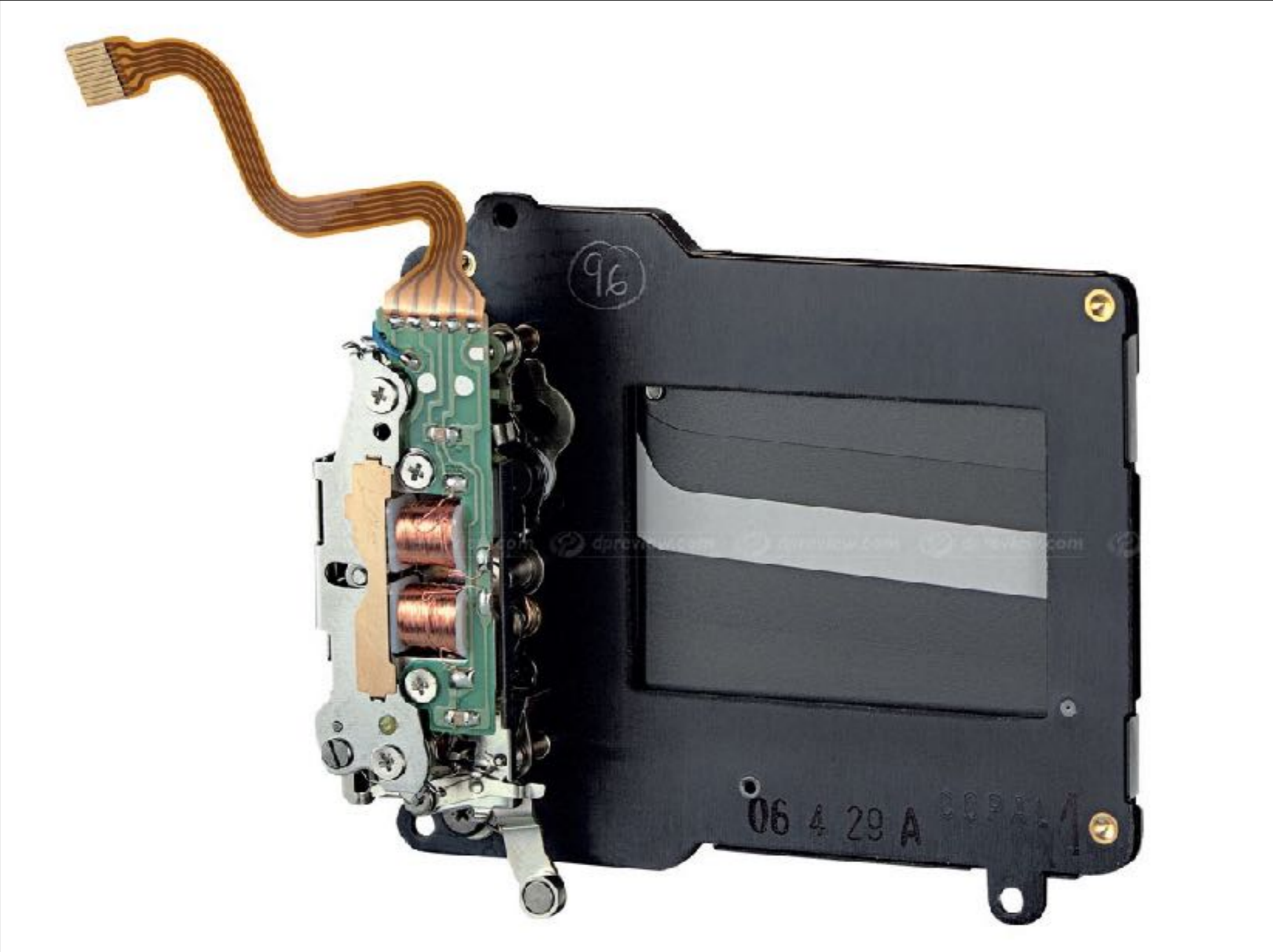
Lighting

Exposure

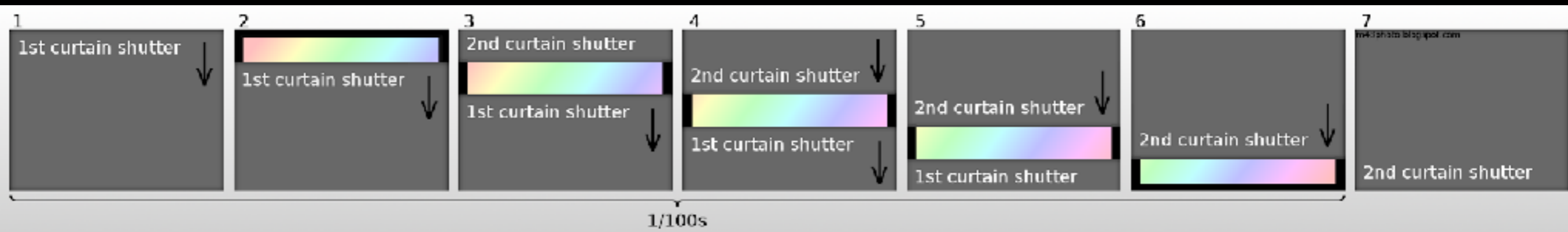
Aperture + Shutter Speed



Curtain Shutter



Curtain Shutter



Lenses

Portrait Lens



85mm @ 200cm

35mm @ 85cm

16mm @ 40cm

12mm @ 30cm

8mm @ 20cm

Portrait Lens



24mm



50mm



85mm



200mm

200mm





16mm lens



35mm lens



70mm lens



150mm lens

All taken at the same aperture

Types of Light Sources

Natural Light



Monolight (outlet + battery)



Fluorescent Light



Tungsten Light



Speedlites



Ratios

Ratios

1:1



3:2



4:1



5:1



2:1



3:1



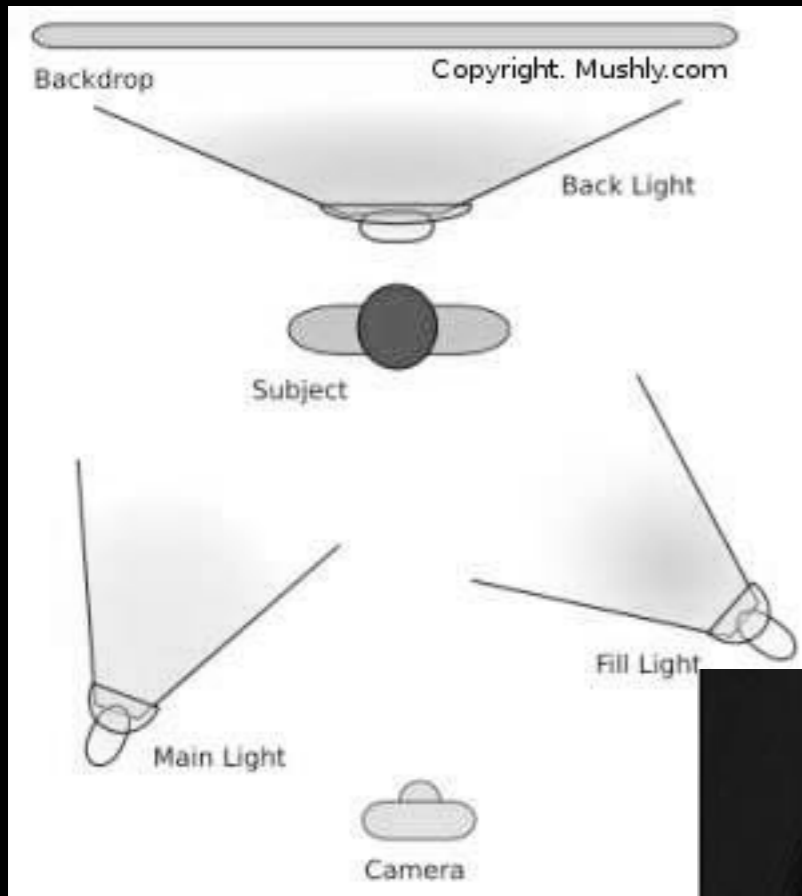
7:1



∞ :1



Metering



fill light only



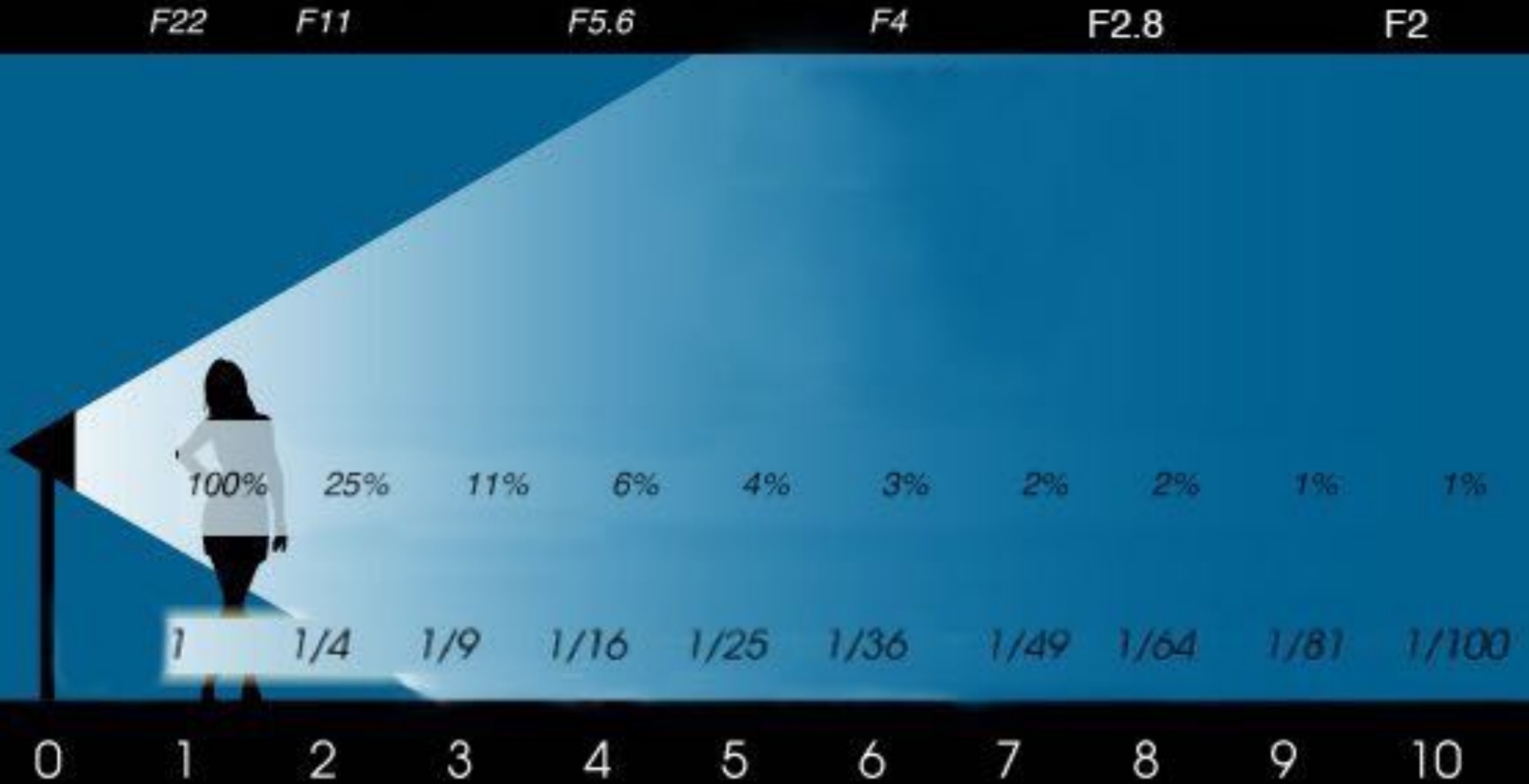
main light only



main and fill



Inverse Square Law



Light Modifiers

Umbrella



Umbrella



Softbox



Octabank



Beauty Dish



Beauty Dish vs Softbox

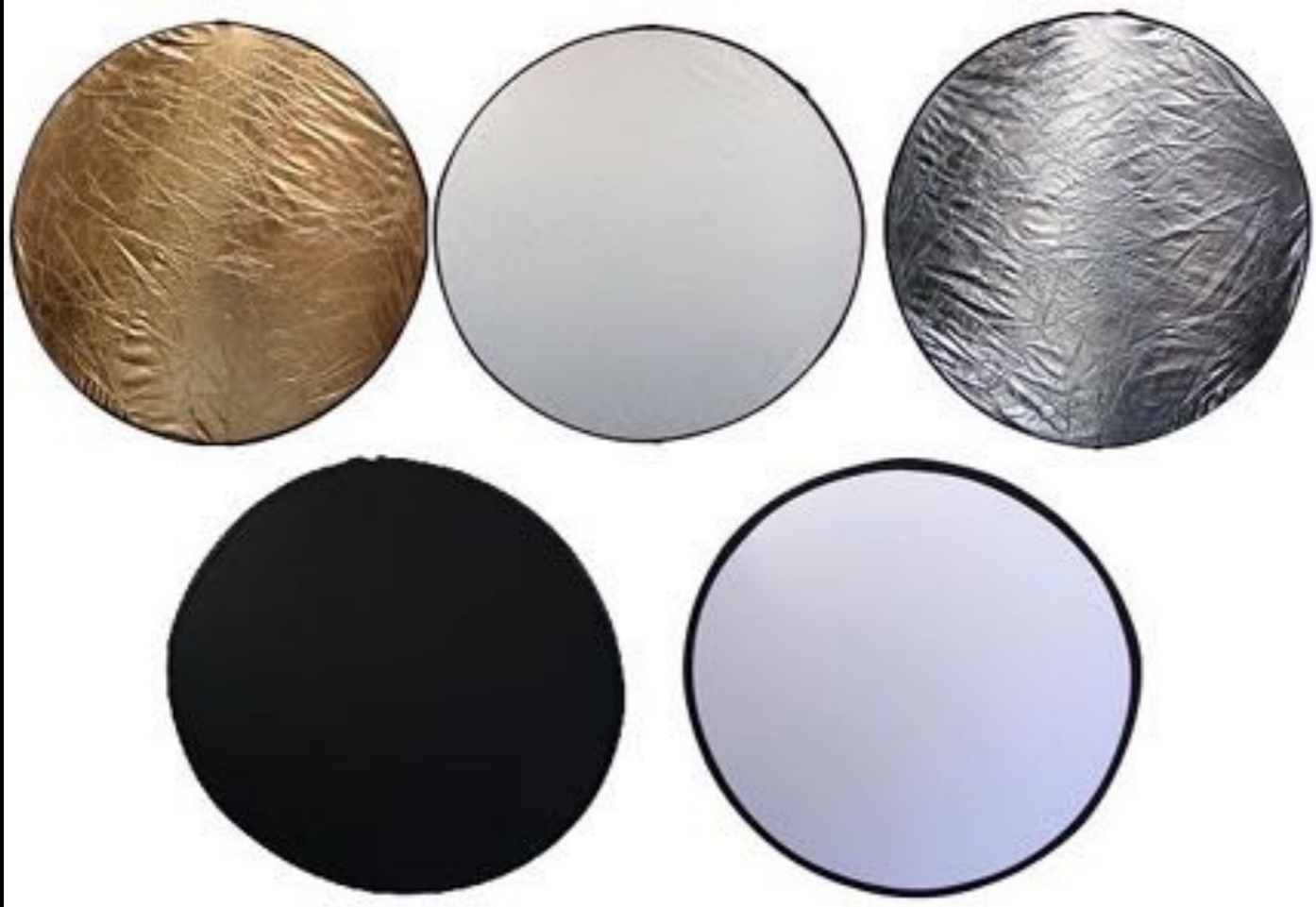


Beauty Dish



Deep Octa

Reflector



Sun Swatter



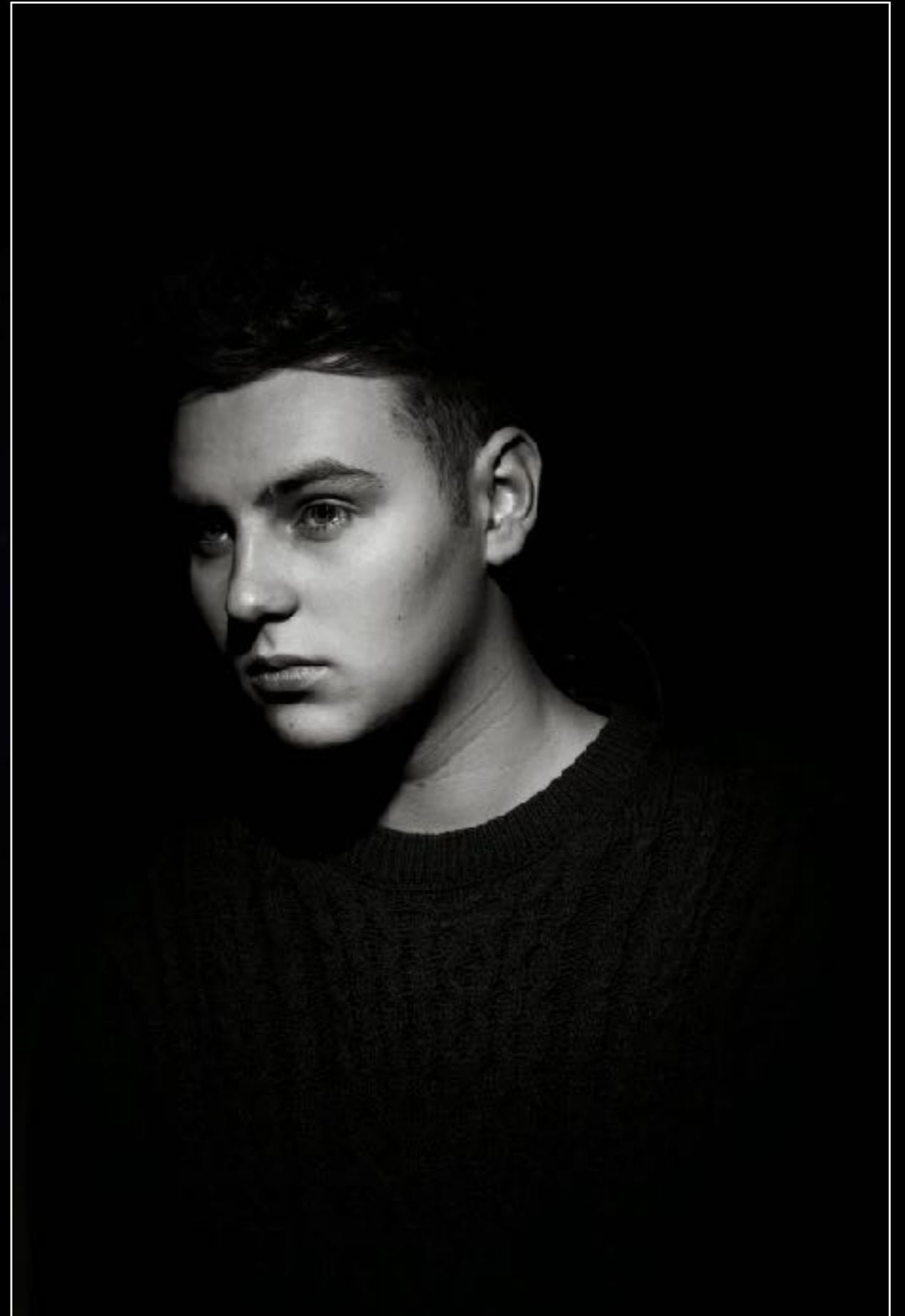
California Sunbounce



Barn Doors



Grid



Snoot

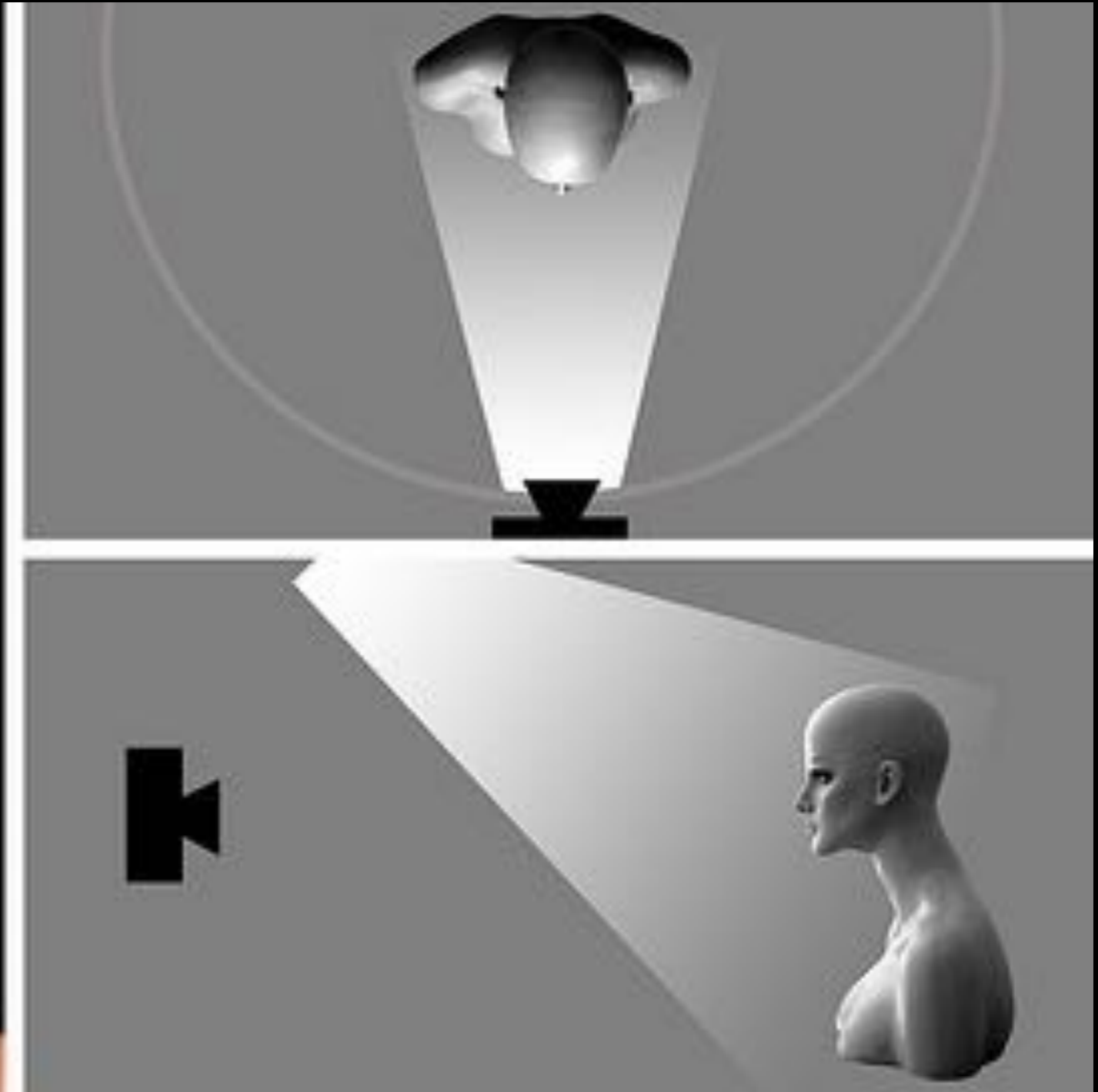


Lighting Setups

Butterfly Lighting



Butterfly Lighting



Butterfly Lighting



THE LORD OF THE RINGS

THE RETURN OF THE KING

THE JOURNEY CONTINUES

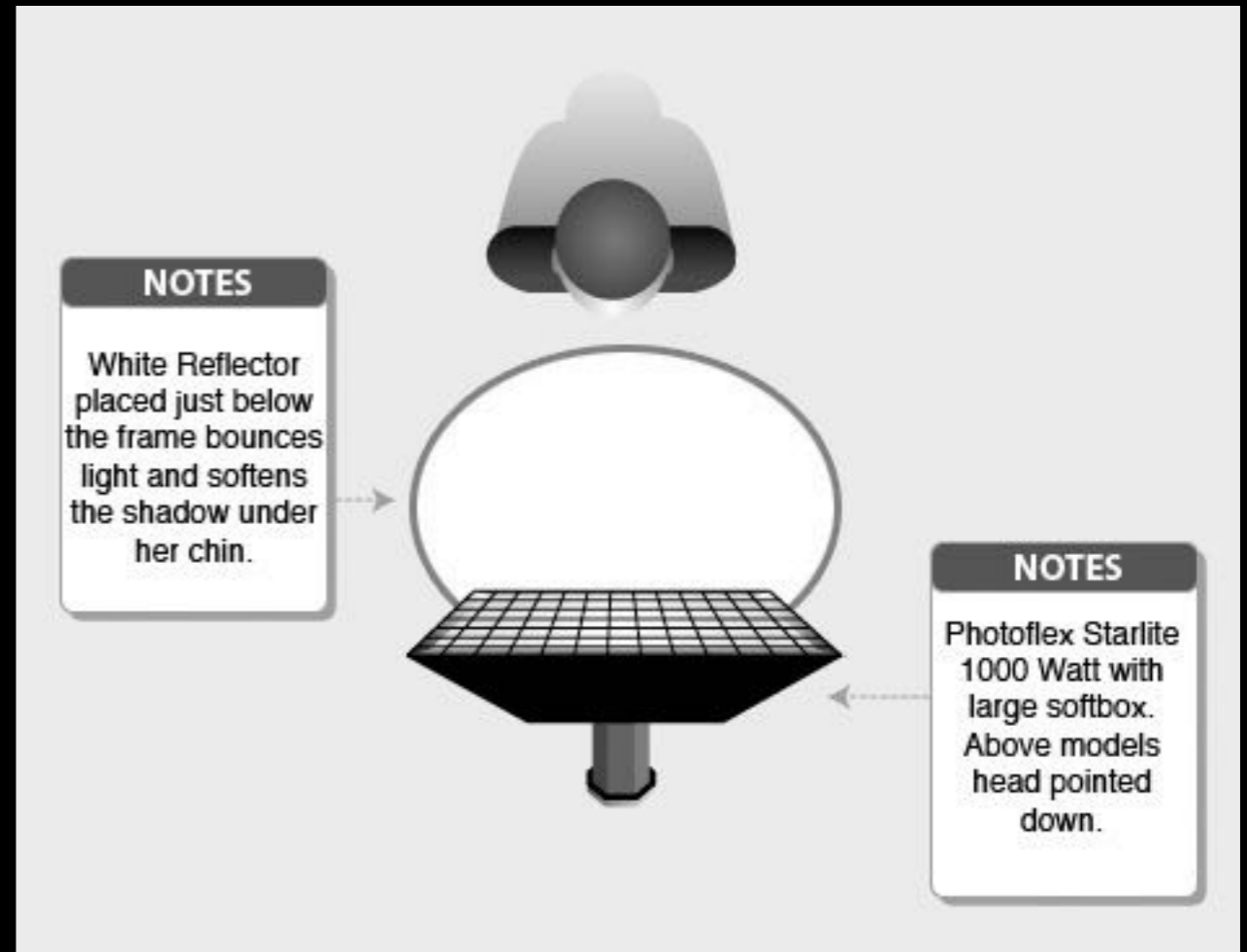
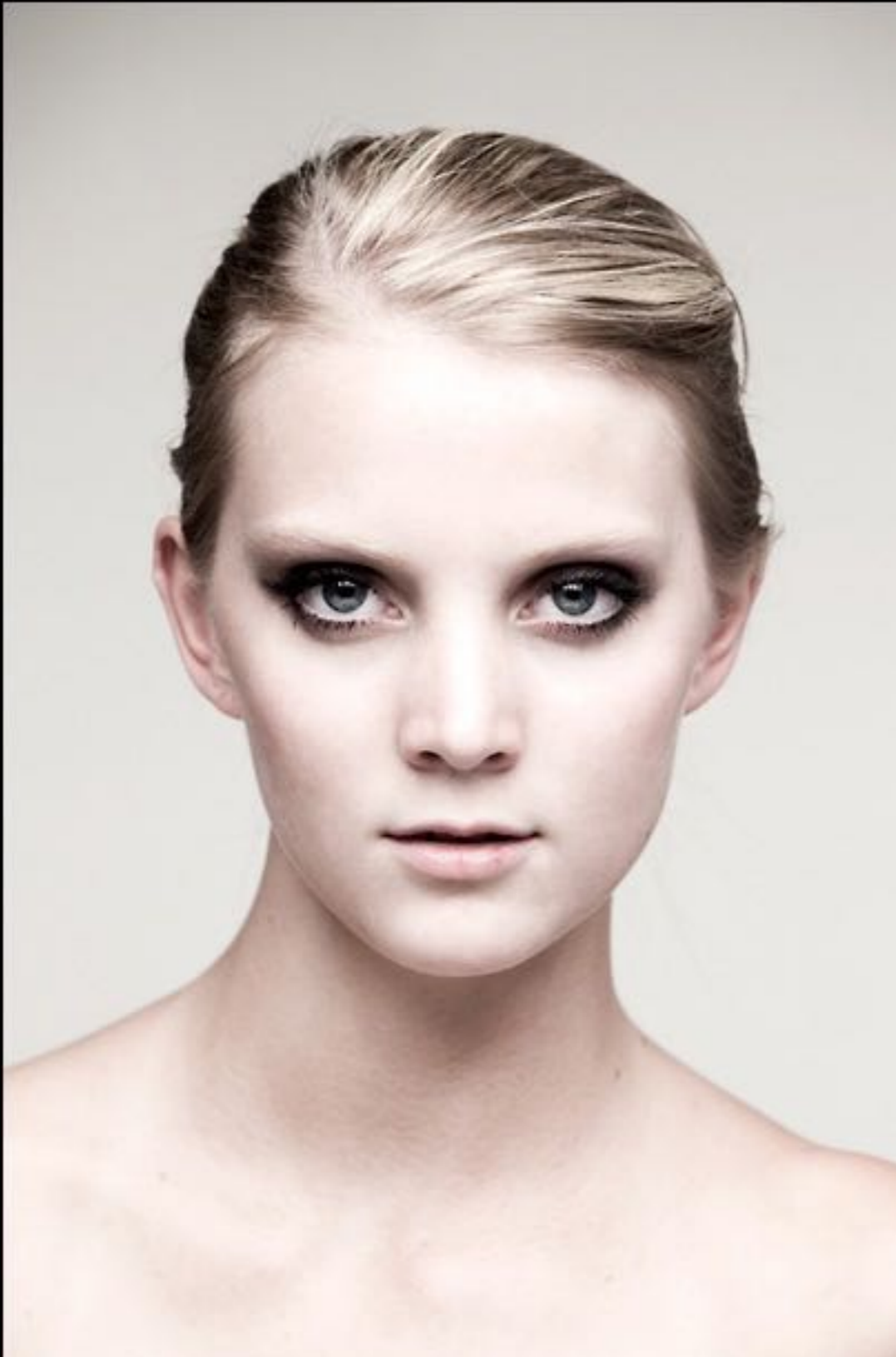
DECEMBER 17, 2003



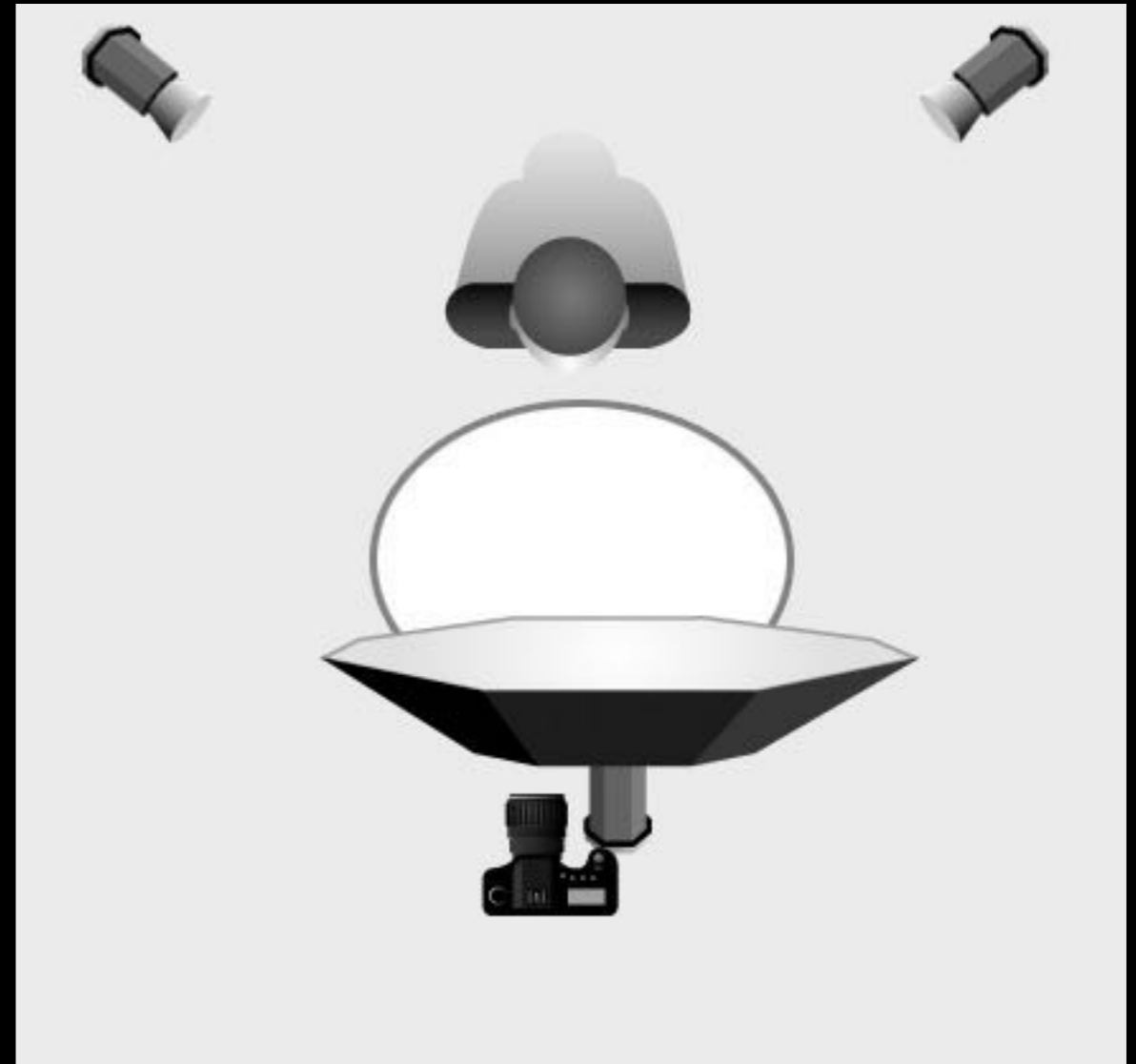
WWW.LORDOFTHERINGS.NET
KEYWORD: LORD OF THE RINGS

© 2003 NEW LINE PRODUCTIONS, INC. THE LORD OF THE RINGS, AND THE NAMES OF THE CHARACTERS, EVENTS, PLACES, AND PLACES THEREIN, ARE TRADEMARKS OF THE SAUL ZAENTZ COMPANY LTD/A TOLKIEN ENTERPRISES UNDER LICENSE TO NEW LINE PRODUCTIONS, INC. ALL RIGHTS RESERVED.

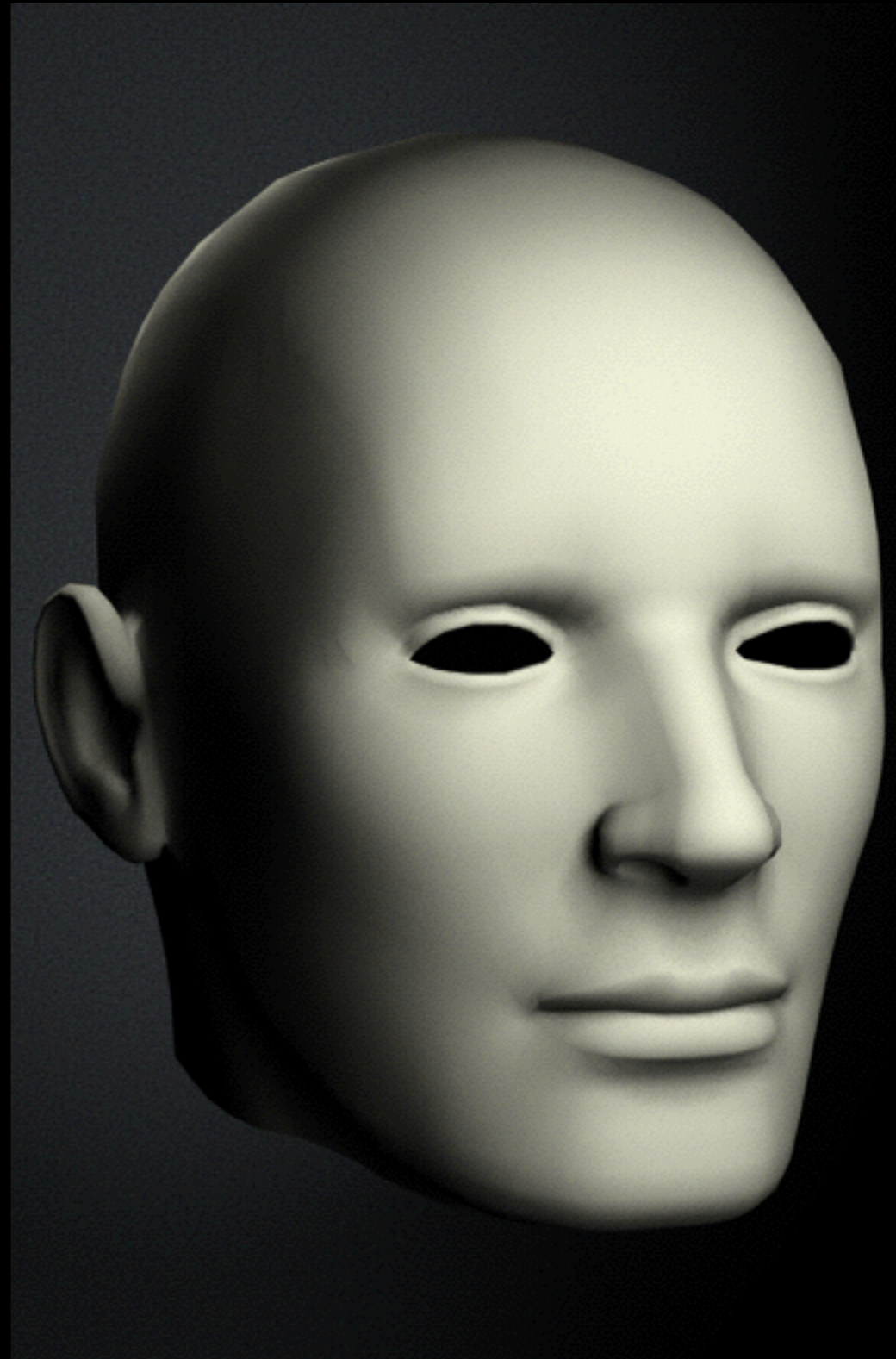
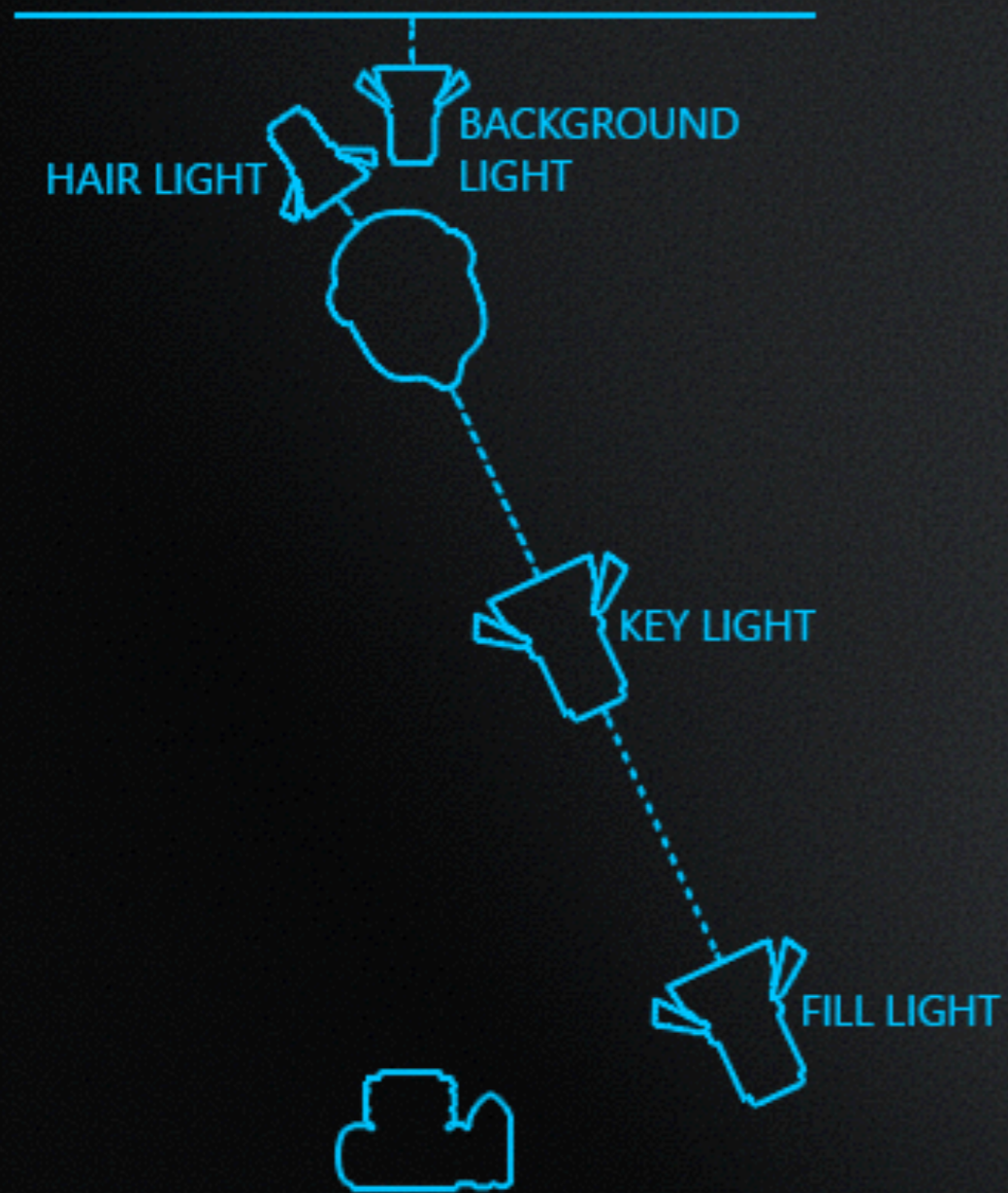
Butterfly Lighting



Butterfly Lighting



Paramount Lighting



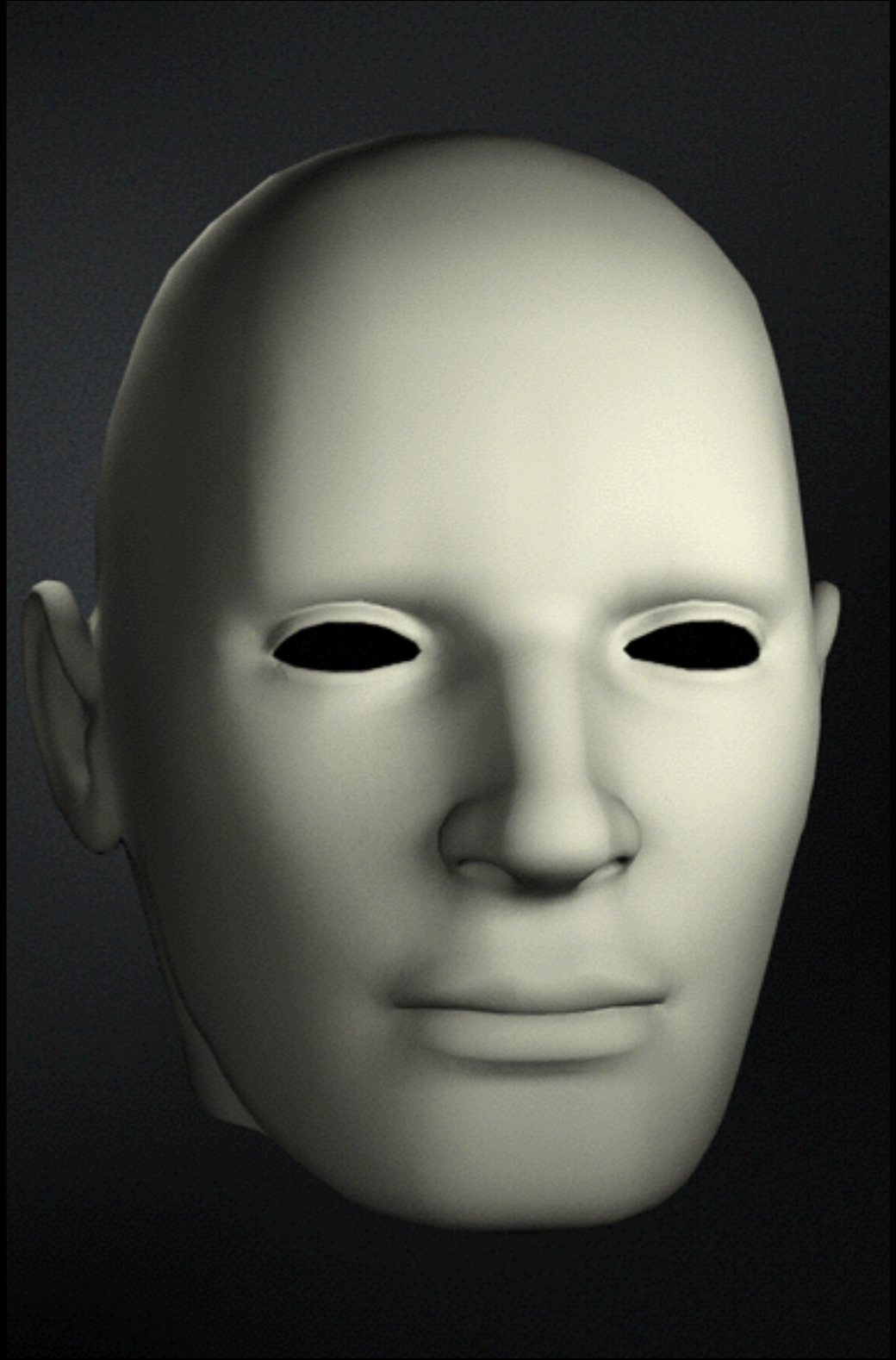
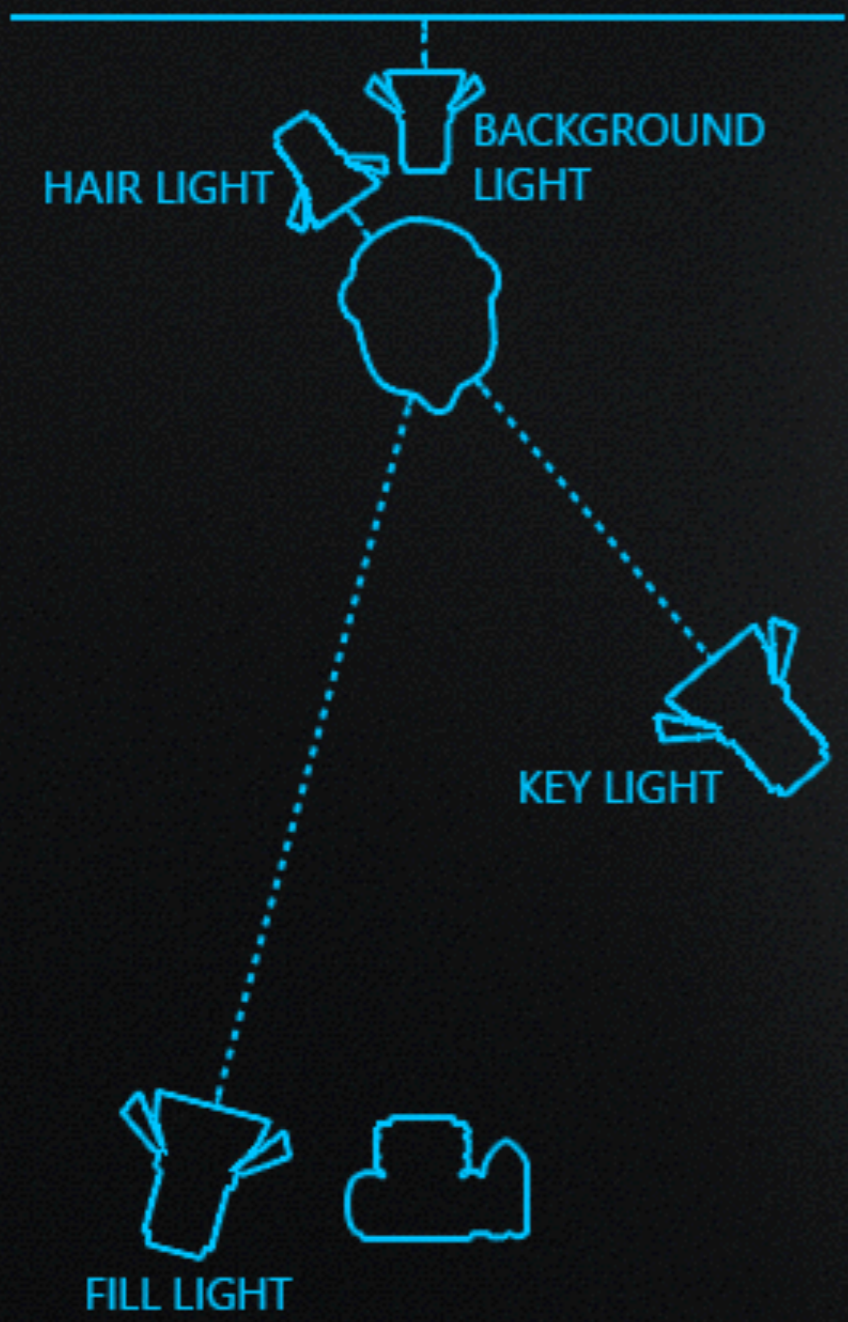
Loop Lighting



Loop Lighting



3 Point / Loop Lighting



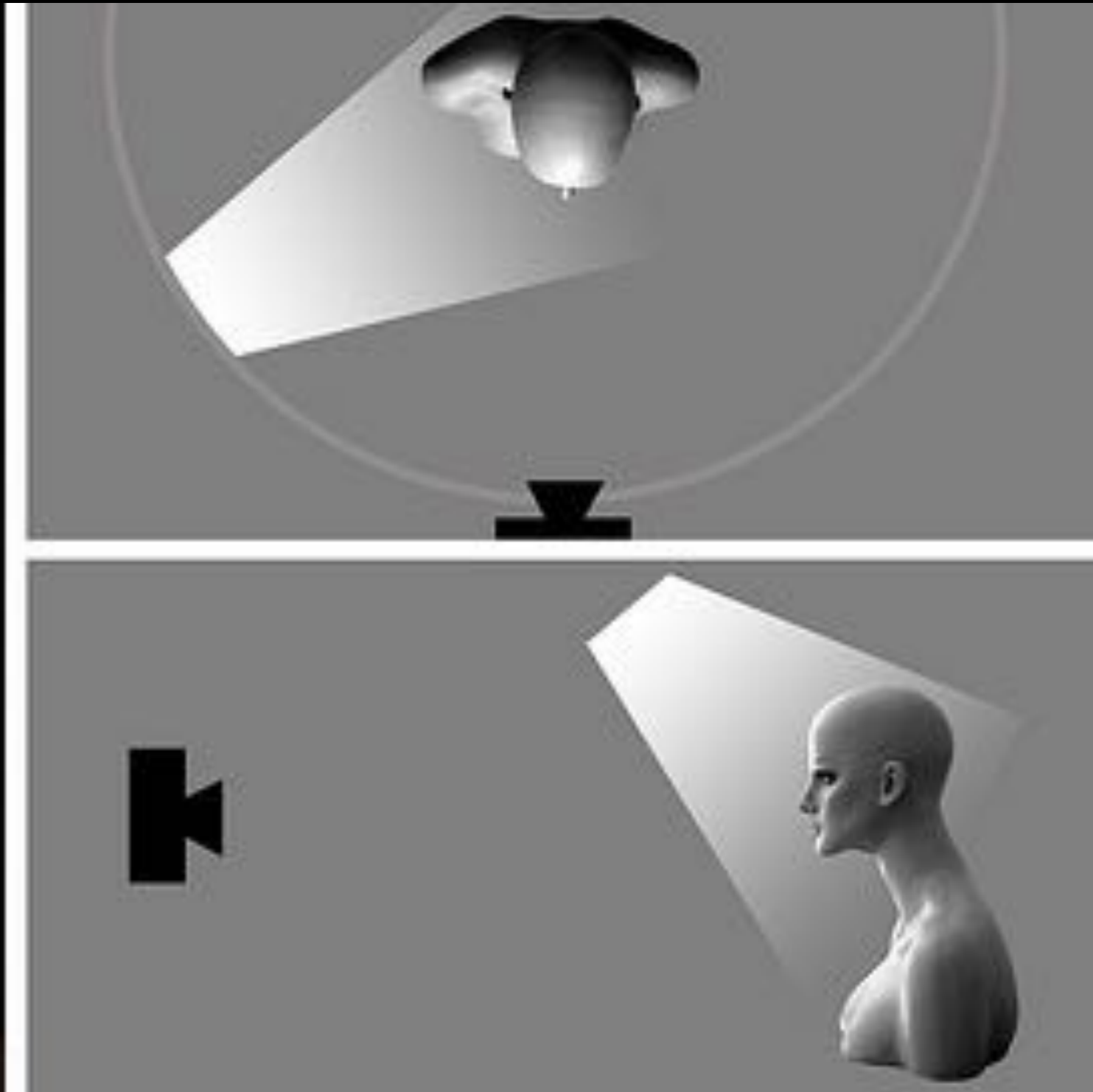
Rembrandt Lighting



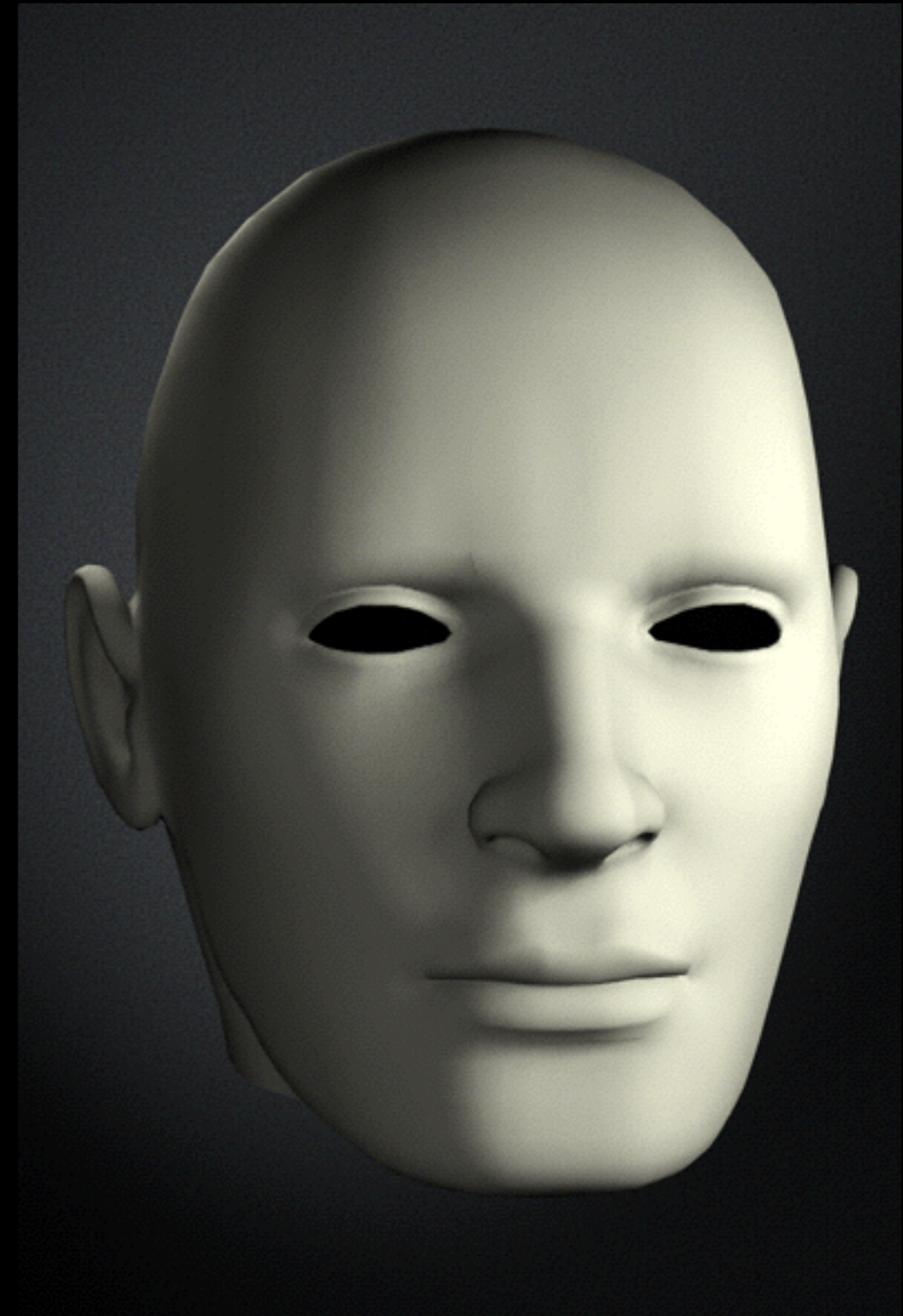
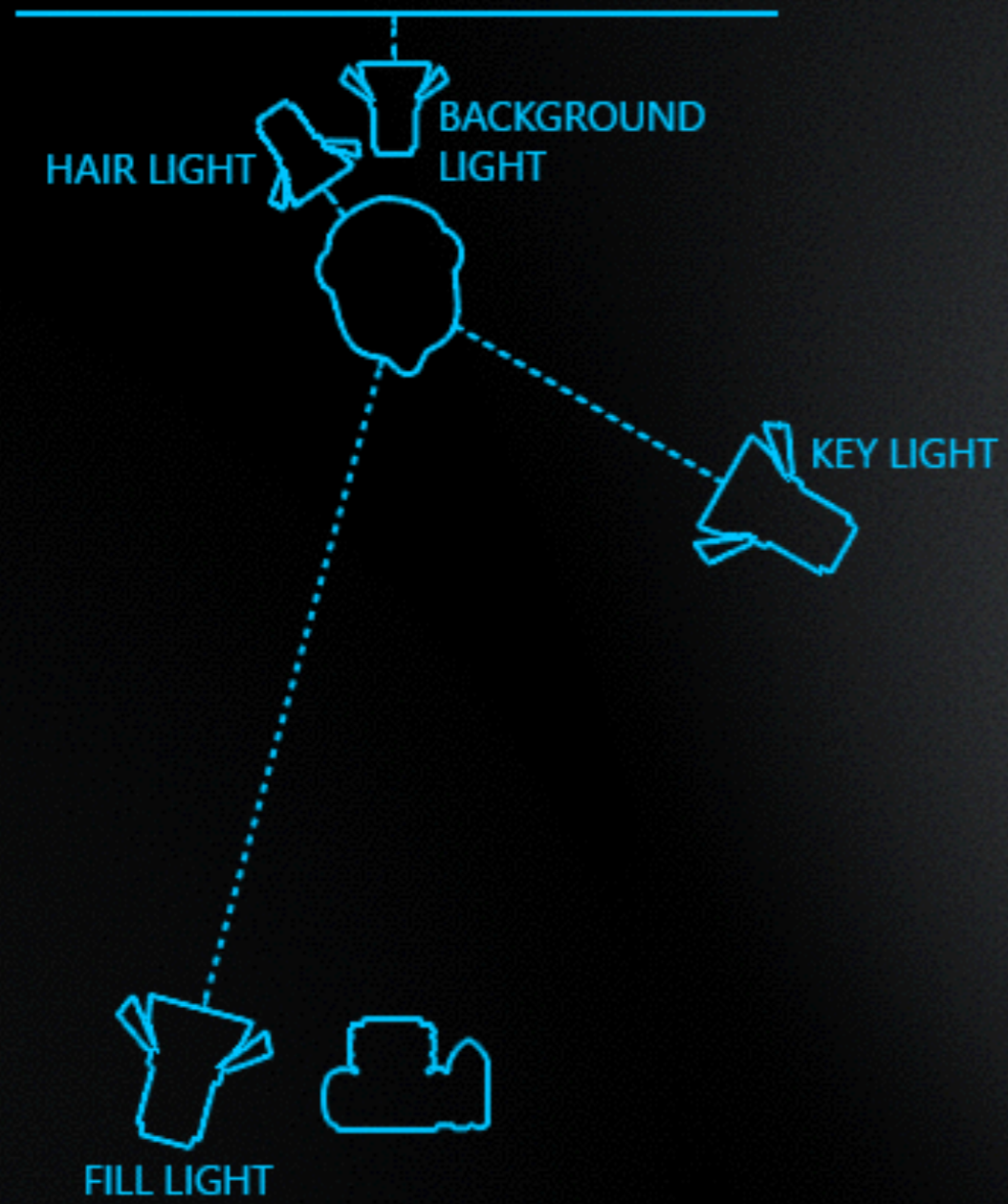
Rembrandt Lighting



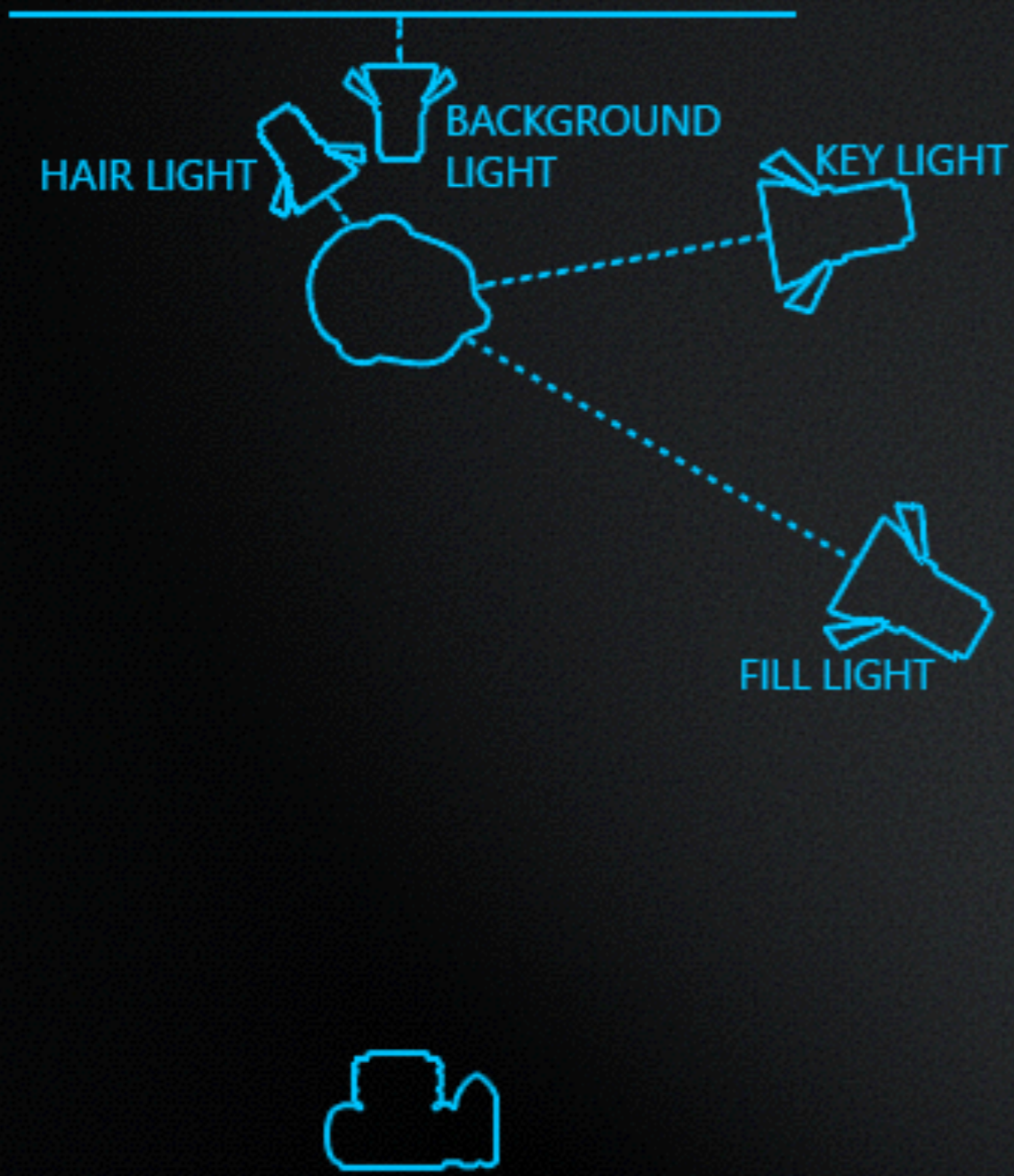
Rembrandt Lighting



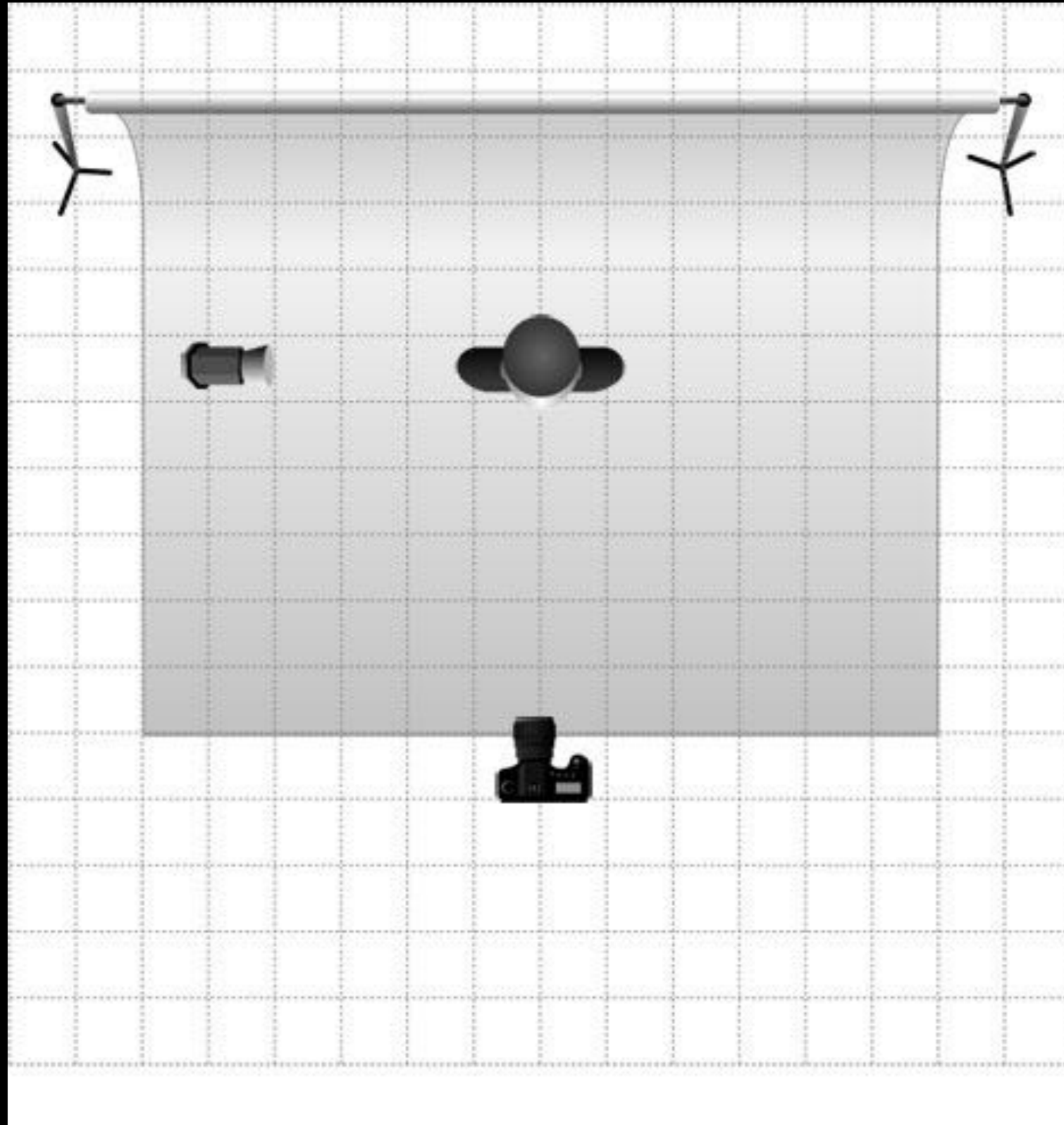
Rembrandt Lighting



Side Lighting



Side Lighting



Vermeer Lighting



Vermeer Lighting



Subtractive Lighting



Subtractive / Negative Lighting



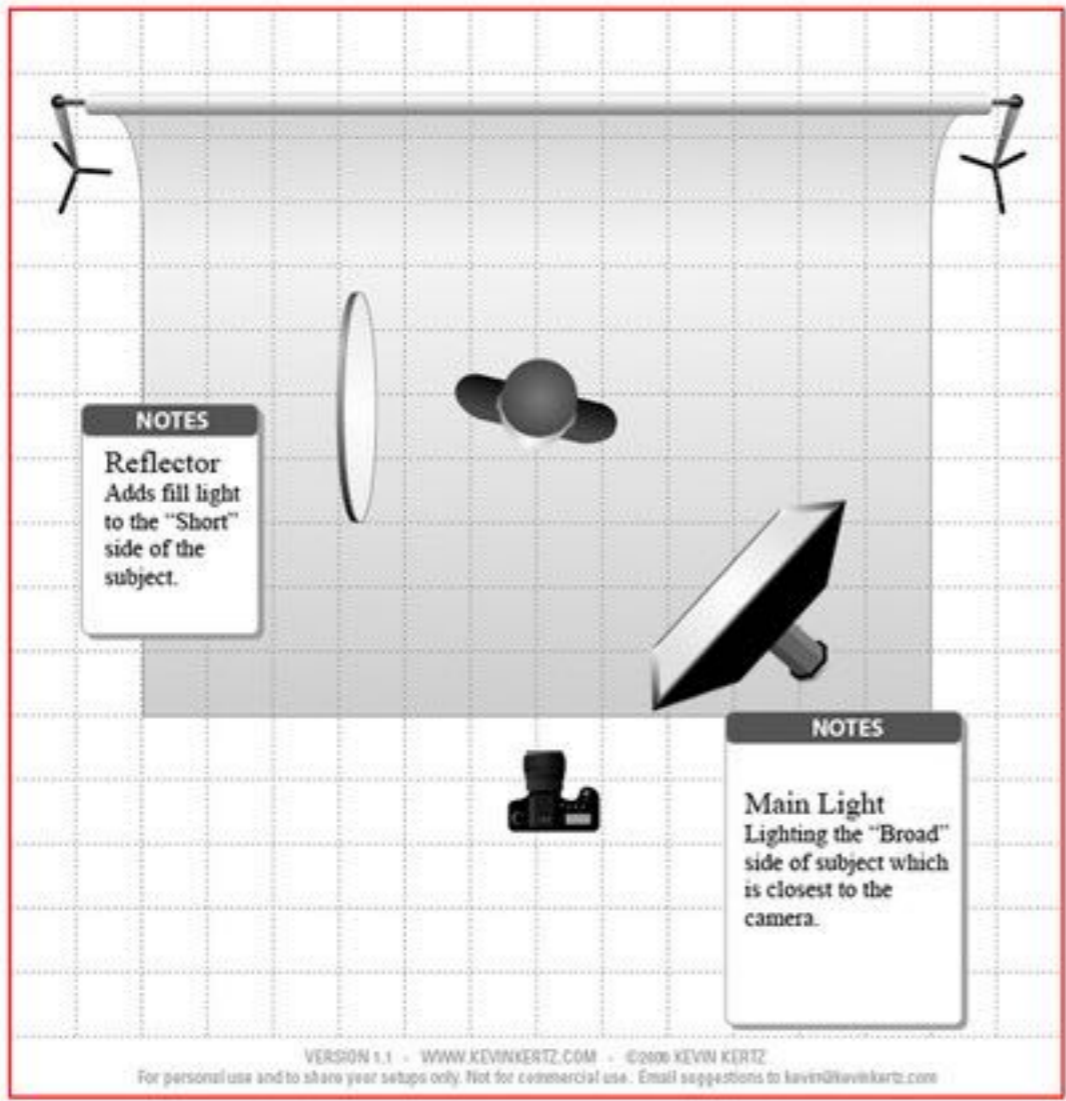
Broad Lighting



Short Lighting



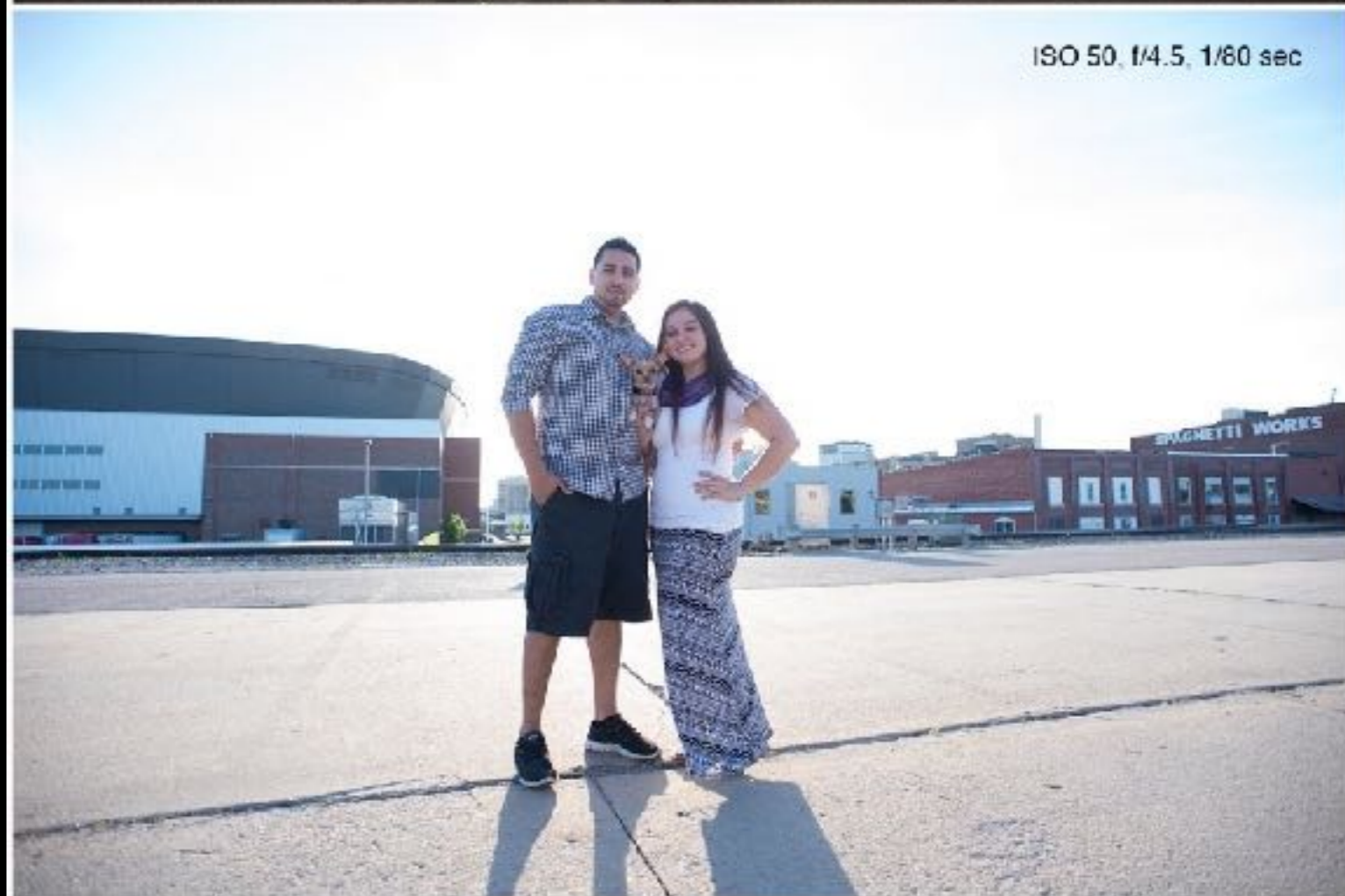
Broad Lighting



Broad Lighting

Mixing Light Sources

Natural + Artificial Light Sources



Natural + Artificial Light Sources



Neutral Density Filter

Neutral Density Filter



Neutral Density Filter



Split Lighting

White
Balance

White Balance

AWB

Auto



Tungsten



Fluorescent



Daylight



Cloudy

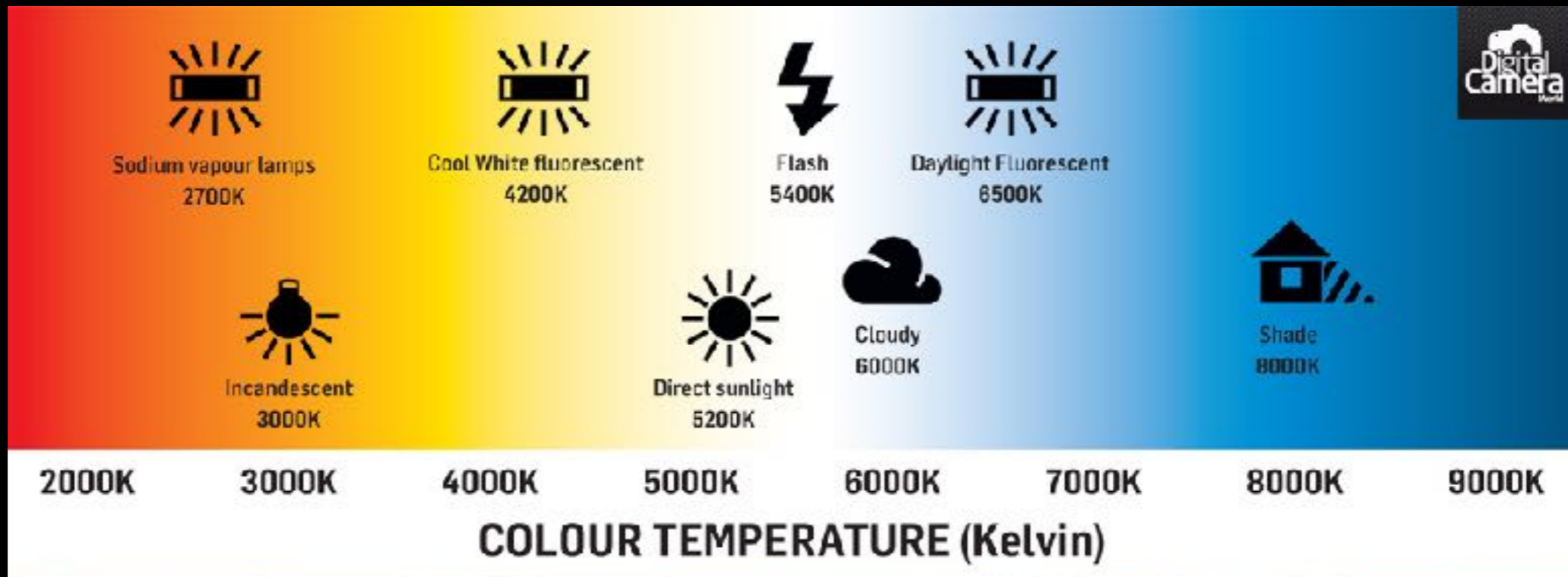


Flash




Shade

White Balance



White Balance

WB SETTINGS	COLOR TEMPERATURE	LIGHT SOURCES
	10000 - 15000 K	Clear Blue Sky
	6500 - 8000 K	Cloudy Sky / Shade
	6000 - 7000 K	Noon Sunlight
	5500 - 6500 K	Average Daylight
	5000 - 5500 K	Electronic Flash
	4000 - 5000 K	Fluorescent Light
	3000 - 4000 K	Early AM / Late PM
	2500 - 3000 K	Domestic Lightning
1000 - 2000 K	Candle Flame	

White Balance

© Hugh Deck 2012



Tungsten



White fluorescent



Daylight



Cloudy



Flash



Shade

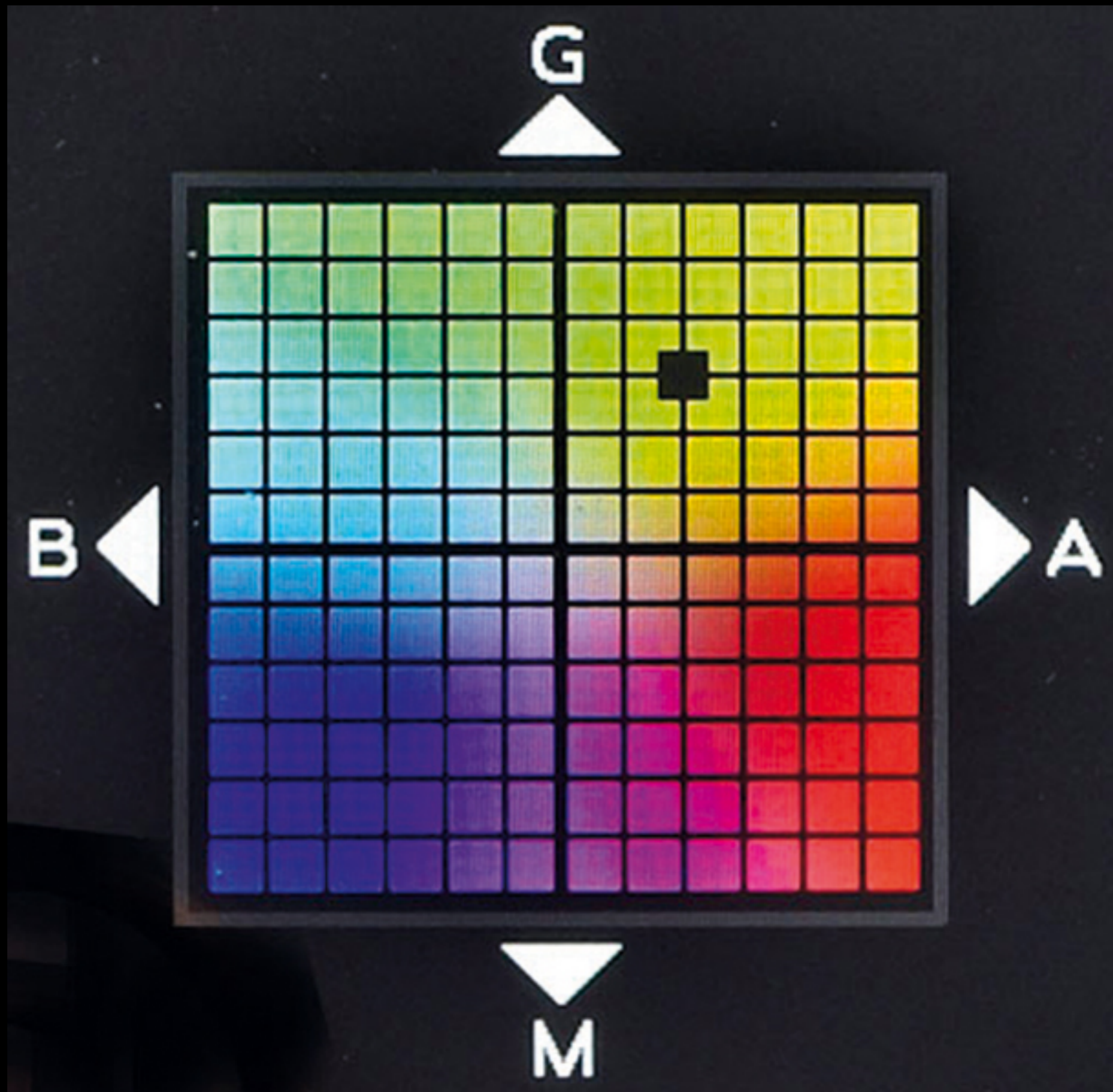


Auto

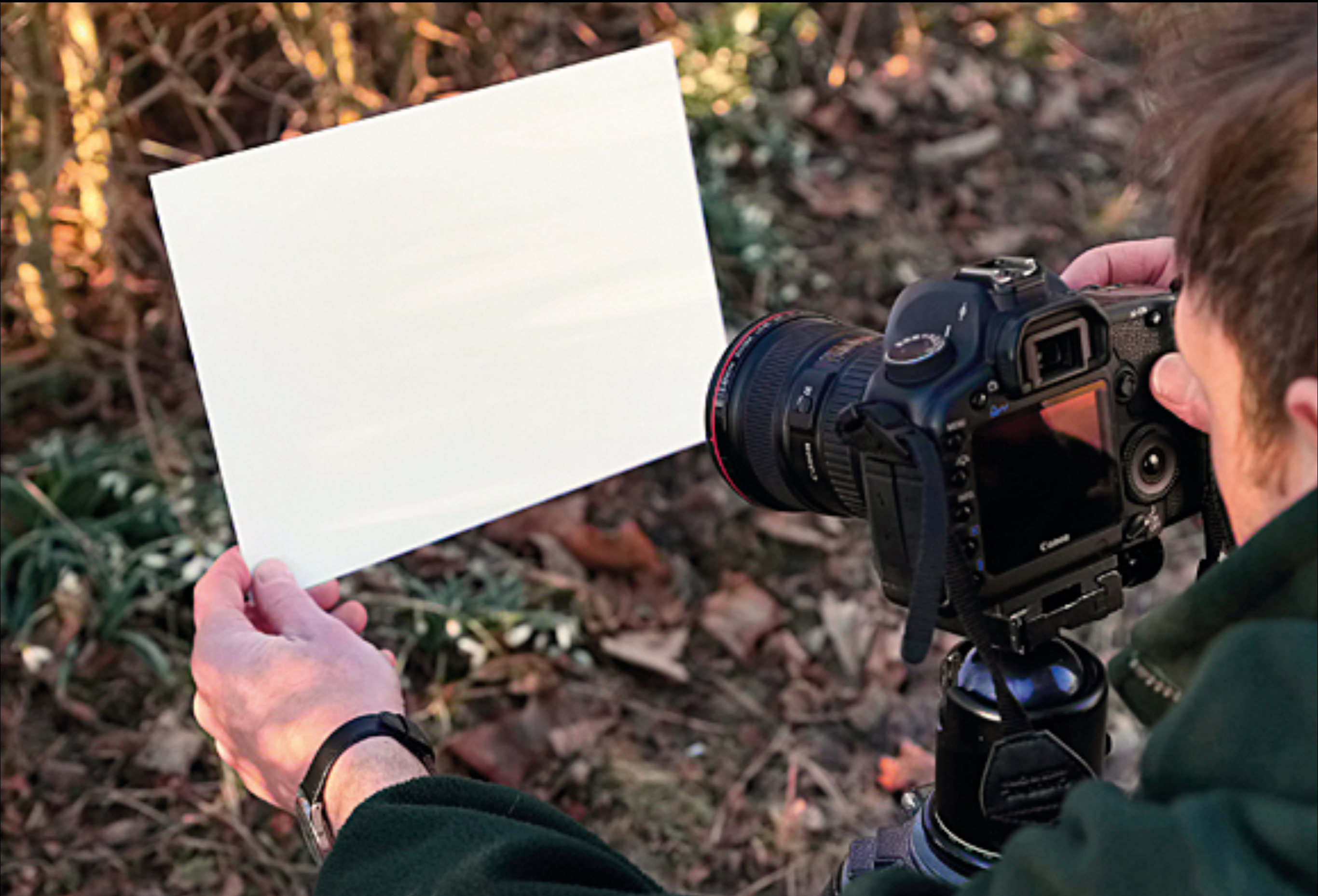


Custom (10,000K)

White Balance



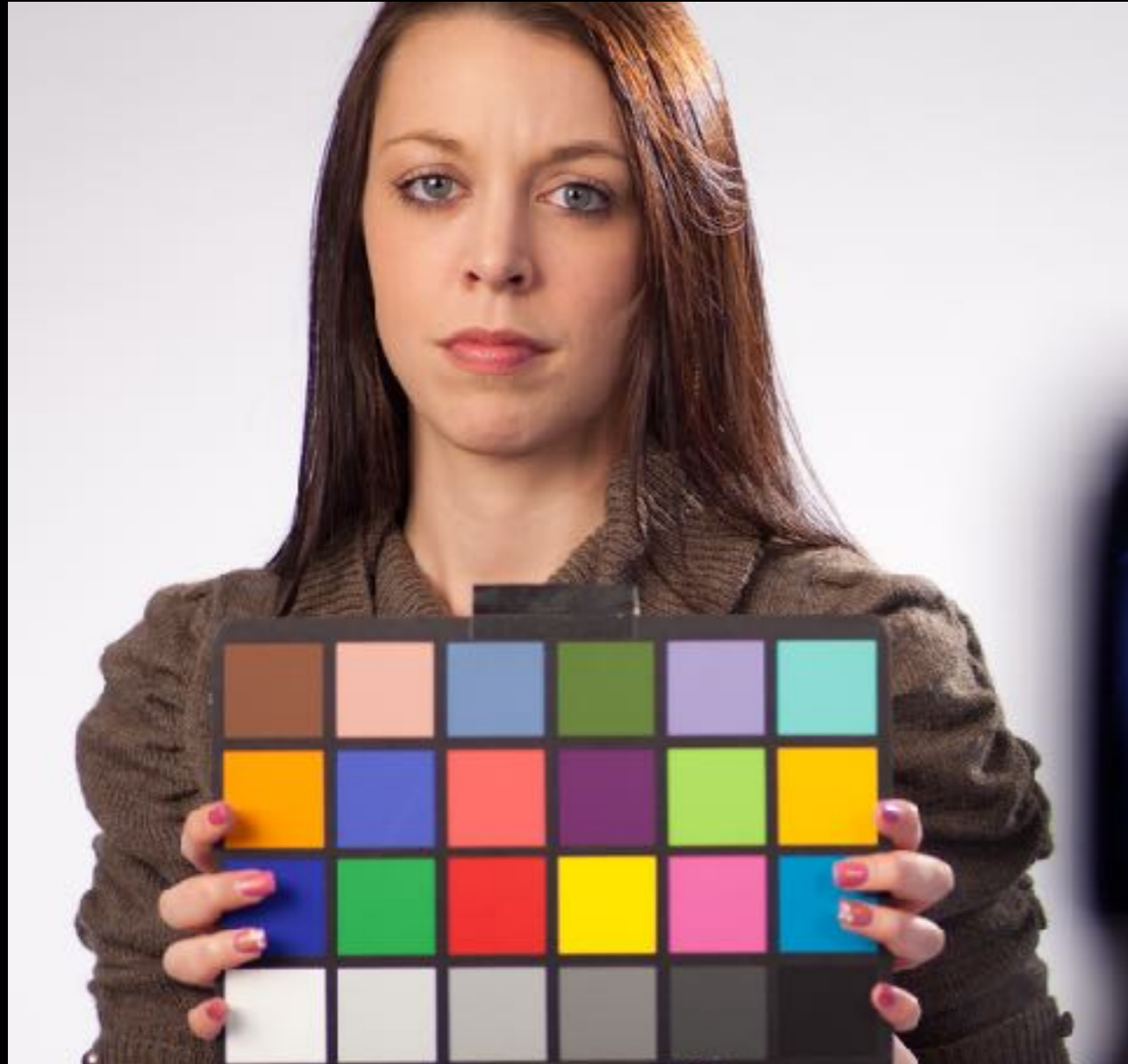
White Balance



White Balance



White Balance



White Balance

Select Rated

Synchroniz

Select White Balance tool here and click on grey card. That's it!



White Balance: As Shot

Temperature 5350

Tint -8

Exposure 0.00

Recovery 33

Fill Light 0

Blacks 5

Brightness +64

Contrast 173

Clarity 0

Vibrance 0

Saturation 0

Canon EOS 5D Mark II IMG_8690.CR2

14.3%

2 selected/2

Save Images

sRGB IEC61966-2.1; 8 bit; 5615 by 3744 (21.CMP); 240 pp

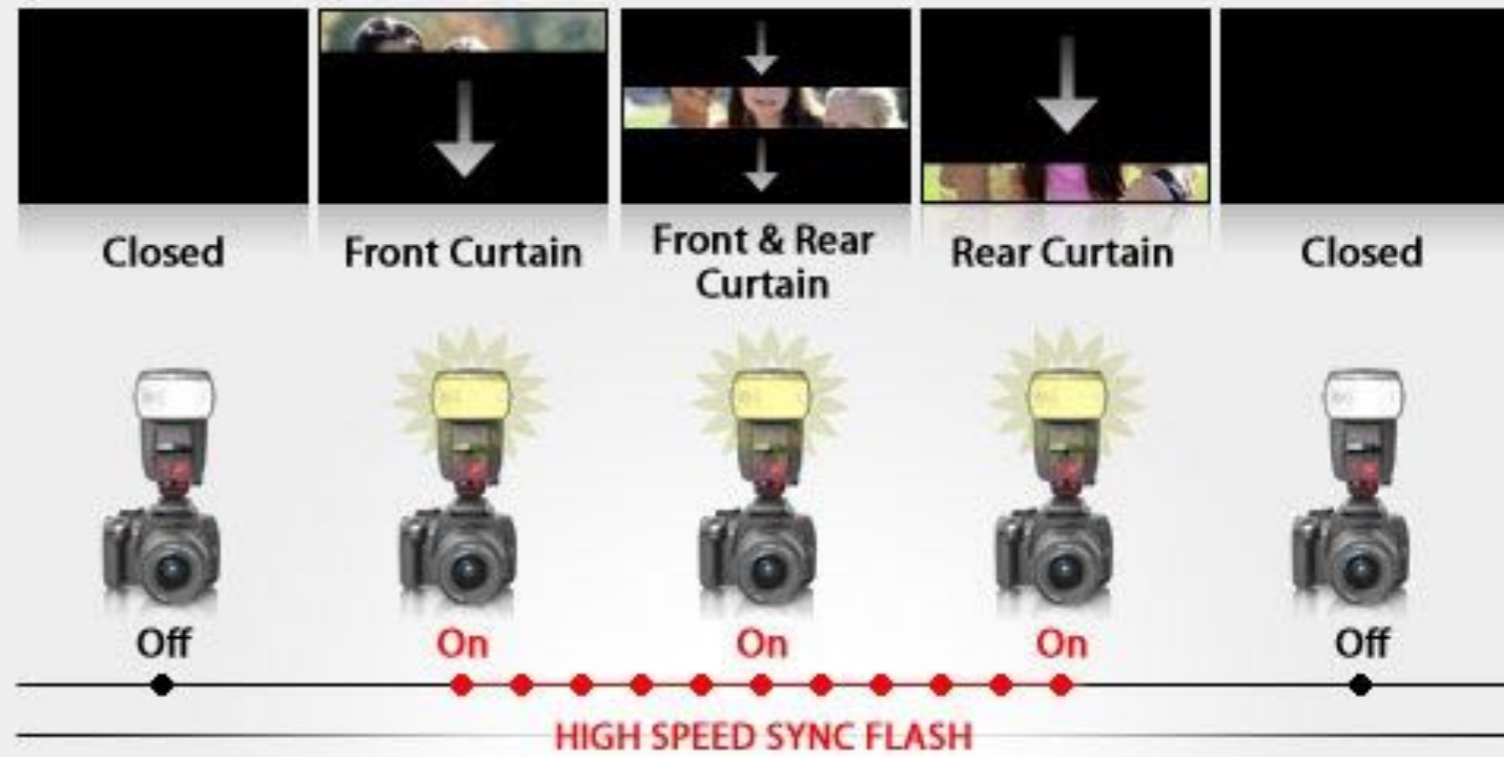
Open Copies

Reset

Done

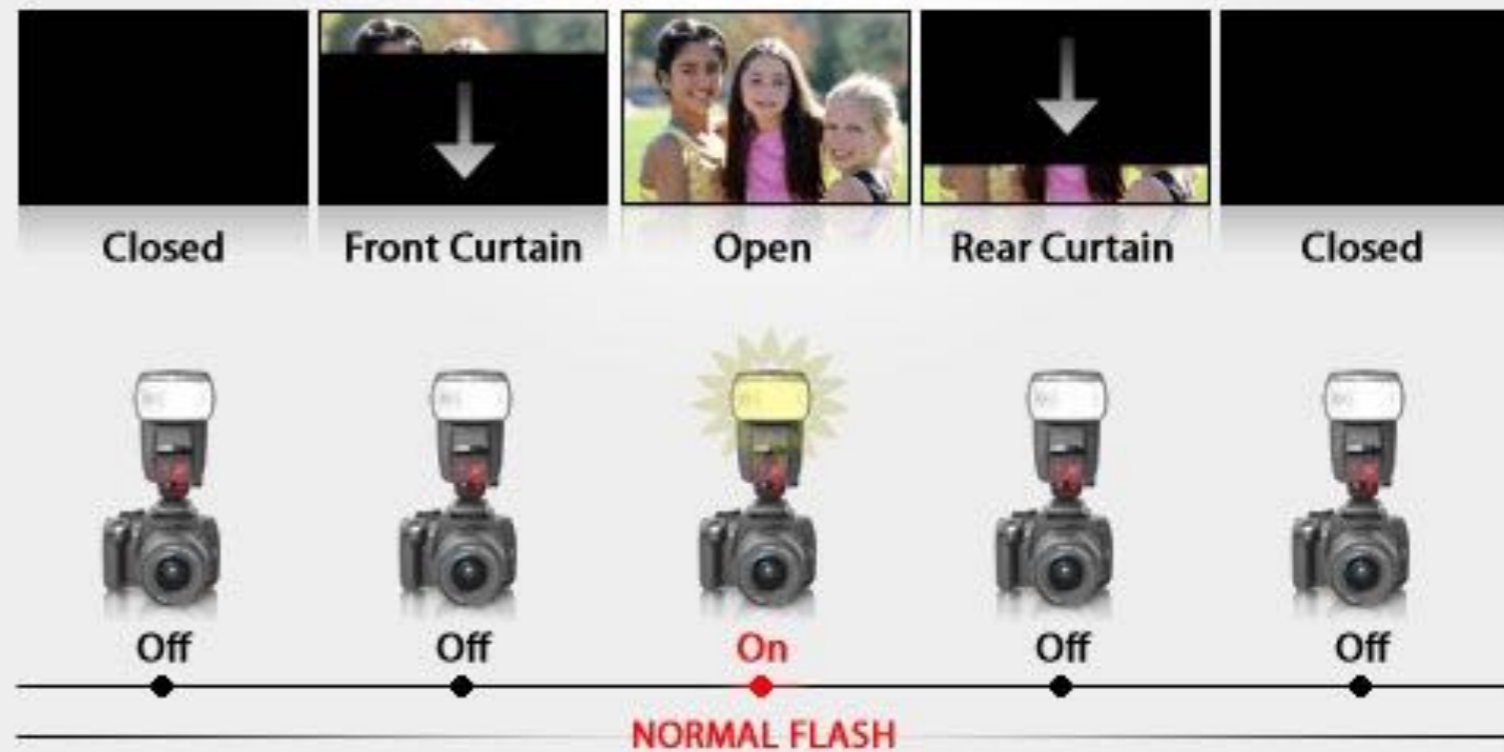
High Speed Sync

FAST SHUTTER SPEED

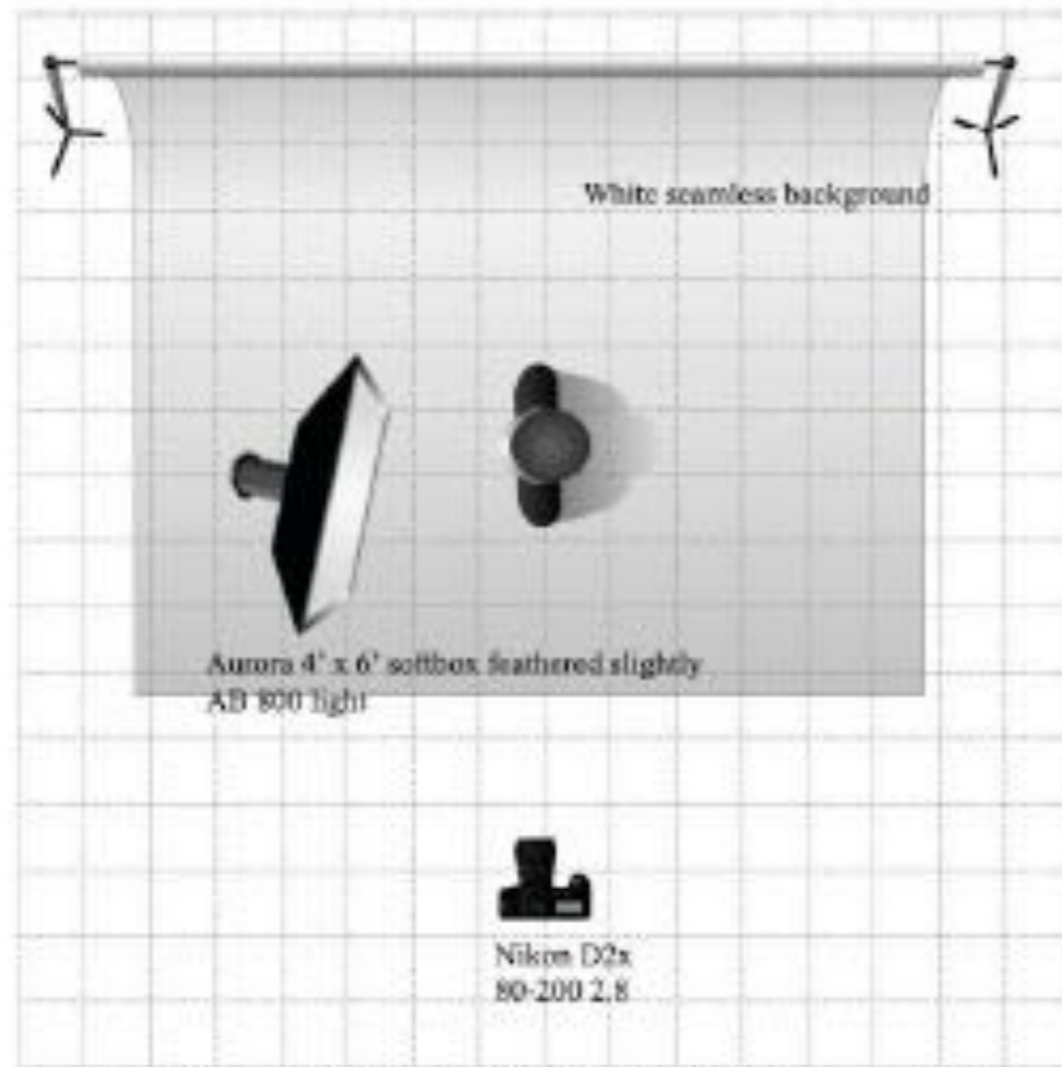


VS.

SLOW SHUTTER SPEED



Side Lighting



PHOTOGRAPHY BY [unreadable] . . . WWW.PHOTOGRAPHY.COM . . . 2006-2007 [unreadable]
All personal use only. Not for commercial use. All rights reserved. [unreadable]

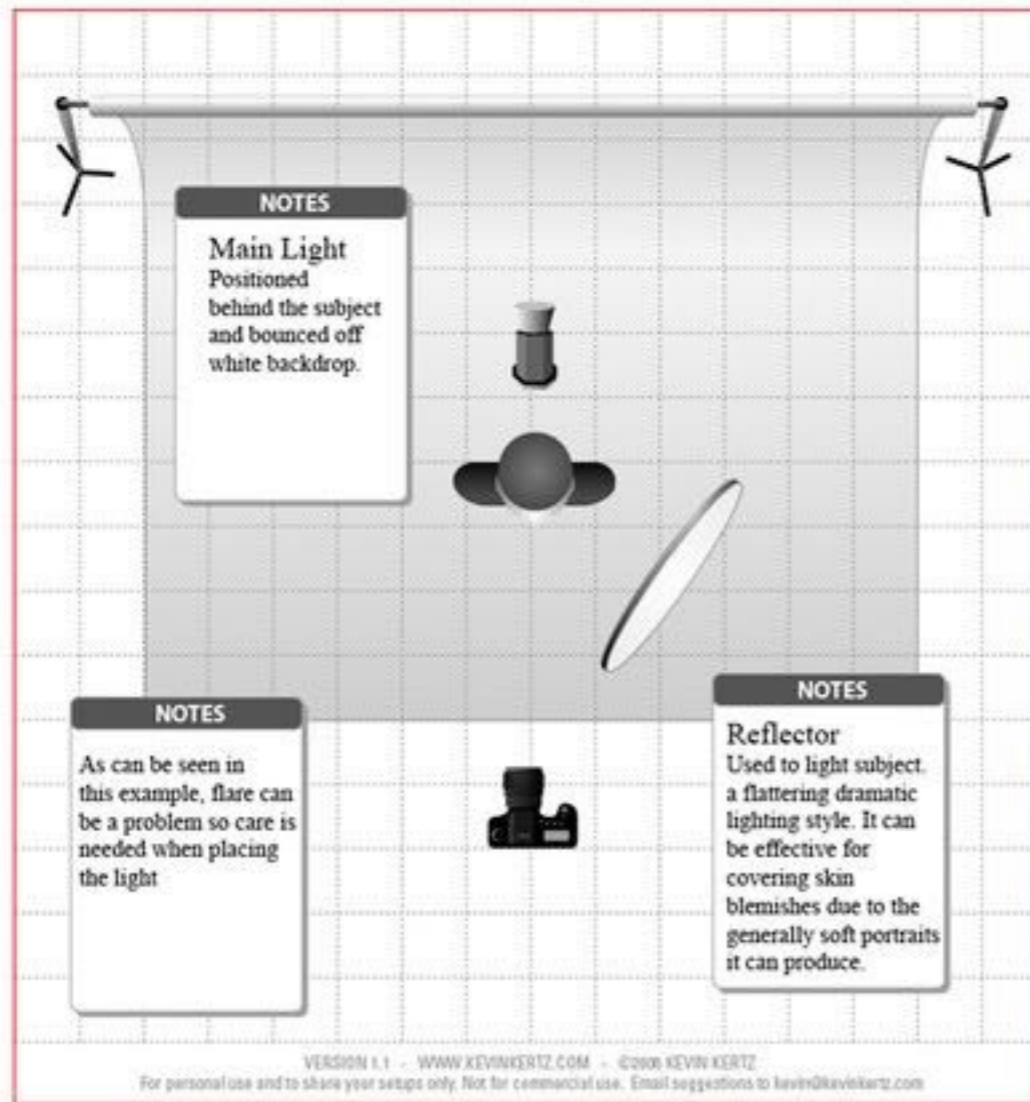
Side Lighting



Jeff Rojas



Backlighting



Backlighting #2

Exposure with a White Background

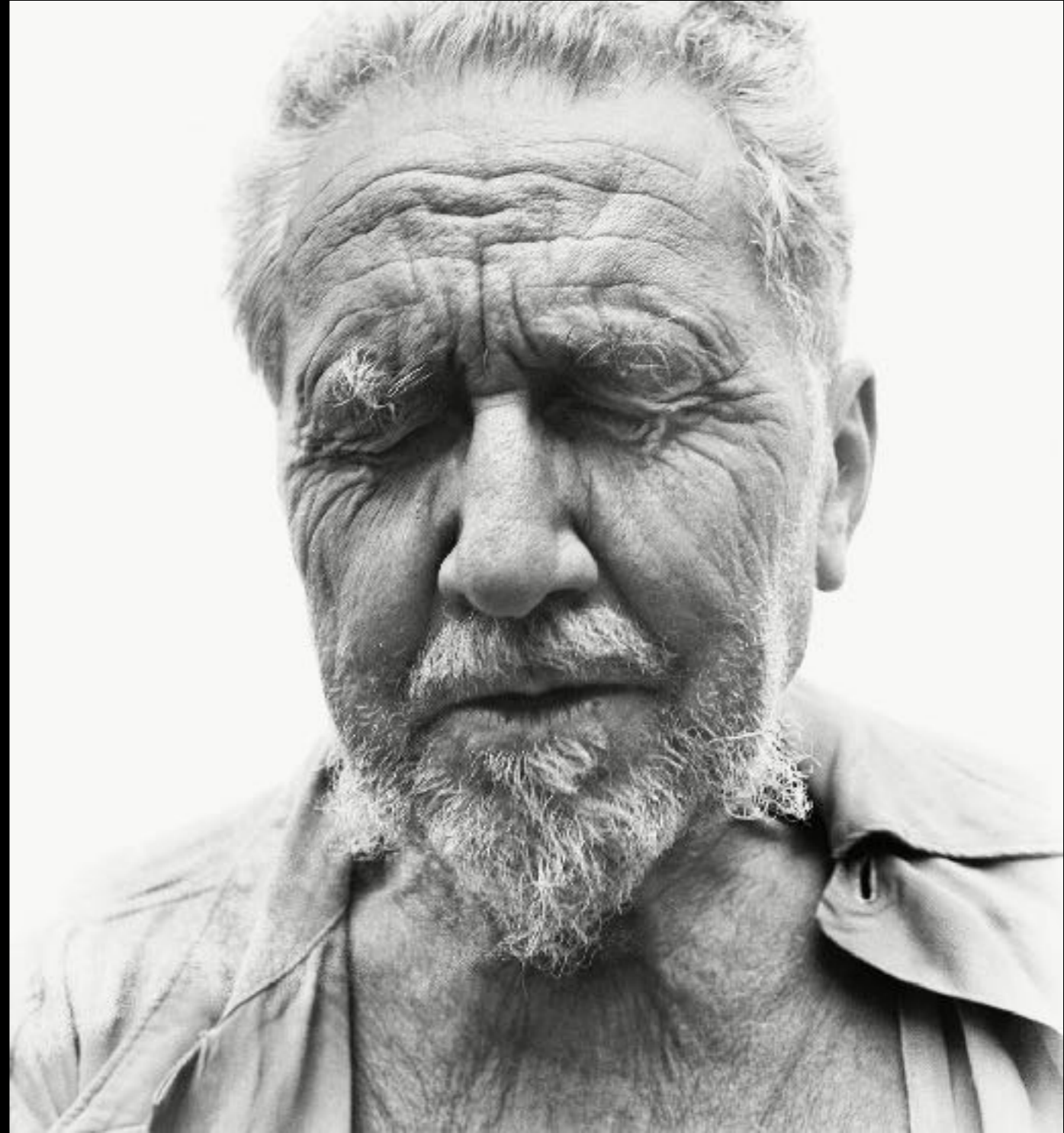
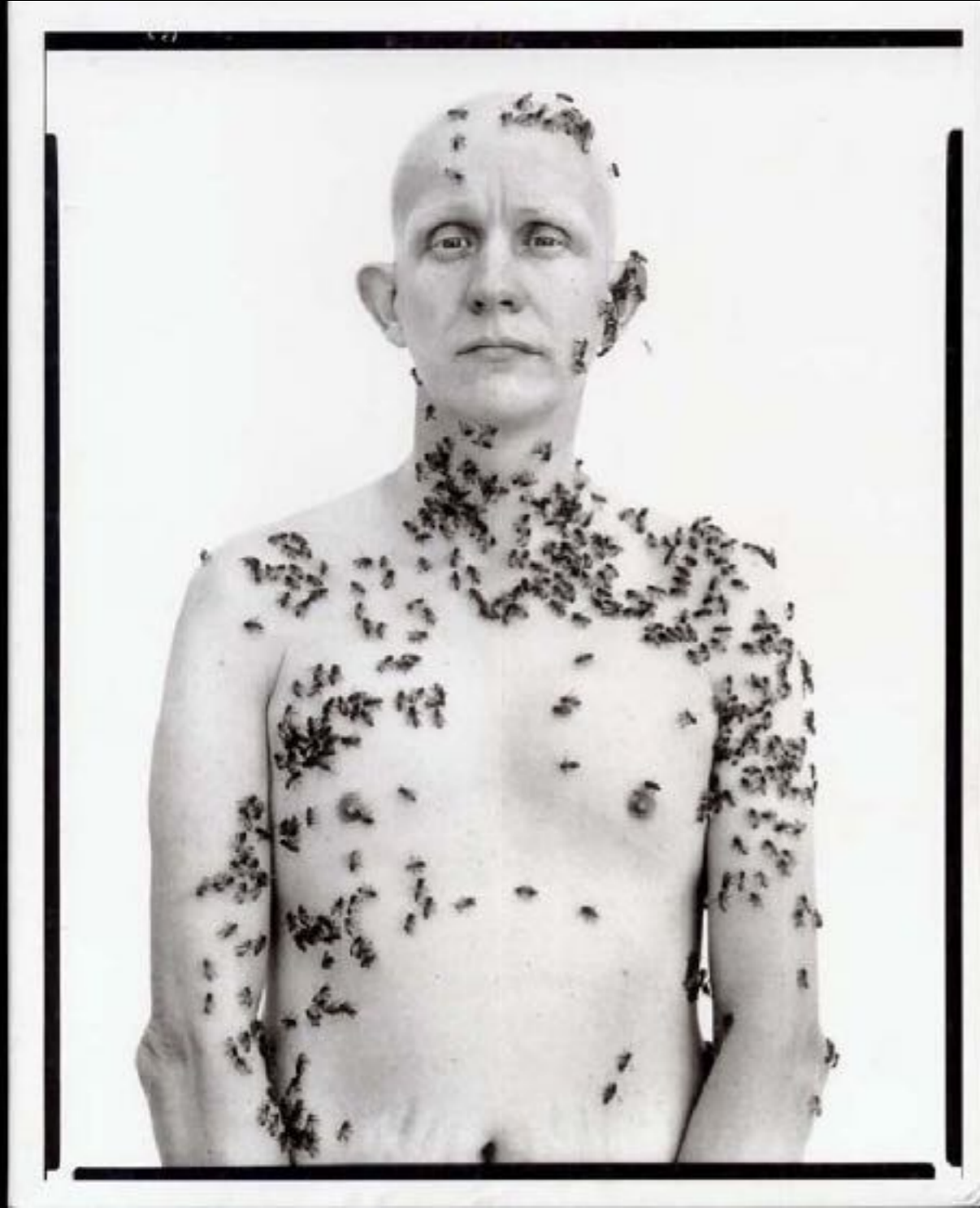
(background 3/4 stop overexposed - model = f11 / background = f11.7)



Exposure with a White Background



Exposure with a White Background



Subtractive / Negative Lighting

Without Negative Fill



With Negative Fill



Curtain Shutter

FRONT CURTAIN SYNC



Front Curtain Sync fires the flash at the beginning of a fast exposure, then records ambient light streaks.

REAR CURTAIN SYNC



Rear Curtain Sync fires the flash at the end of a fast exposure, after the ambient light streaks has been recorded.

Curtain Shutter



Curtain Shutter

